

Operator Assisted Drive Test Report

For

Mysuru

21st to 24th February 2023

Bengaluru-Mysuru NH-948 – 90 Kms

(21st Feb 2023)

Mysuru City & Surrounding Area – 432 Kms

(22st to 24th February 2023)

TRAI RO, Bengaluru Operator-Assisted

Key Performance Indicators:

- All TSPs have met the 2% QOS benchmark of Drop Call Rate except BSNL 3G.
- All TSPs have met the 3% QOS benchmark of Call Block Rate.
- All 2G/3G/4G TSPs except JIO 4G, BSNL 2G & 3G have met the Rx Quality.

The Operator Assisted Drive Test has been carried out by Regional Office, Bangalore with the help of Service Providers from 21st Feb 2023 To 24th Feb 2023 The drive test covered the route of 522 KMS including NH of 90 Kms & 6 hotspots. Approximately 500 calls were made for each of the 7 networks: three 2G networks, one 3G network and three LTE networks covering four TSPs.

Overview

Voice
Summary

Data
Summary

Overview

Regional Office, TRAI Bengaluru conducted Operator Assisted Drive Test from 21st Feb 2023 To 24th Feb 2023 covering various locations in **Mysuru City & surrounding region**. The performance of Airtel, BSNL, Vodafone Idea and Jio were monitored across various technologies (2G, 3G and 4G/4G). The test results obtained from these drive tests were utilized to assess the network quality for Voice and Data services in terms of

Voice: Coverage, Quality, Hand Over Success Rate, Call Setup Success Rate, Drop Call Rate and Block Call Rate.

Data: Download and Upload Throughputs, Web Browsing Delay and Latency

Drive Test Details:

Voice Tests: Calls were made for 90 sec duration with wait time of 10 sec between calls in all technologies. The drive test covered a drive route of approximately 522 KMs including NH of 90 Kms over a period of 4 days from **21st Feb 2023 To 24th Feb 2023**. Approximately 500 calls were made for each of the 7 networks: three 2G (Lock Mode) networks, one 3G (Dual mode) networks and three 4G network covering 4 unique TSPs.

Data Tests: Dynamic data test (Test Data on Move) was conducted for 522 KMs including NH of 90 Kms over a period of 3 days for download throughput for 3G & 4G technology. Data Tests were performed at 6 static locations; three 2G (Lock mode) networks, one 3G (Dual mode) networks and three 4G (Free mode) networks covering 4 unique TSPs were tested. **All the data through put figure mentioned in the report are based on the average value.**

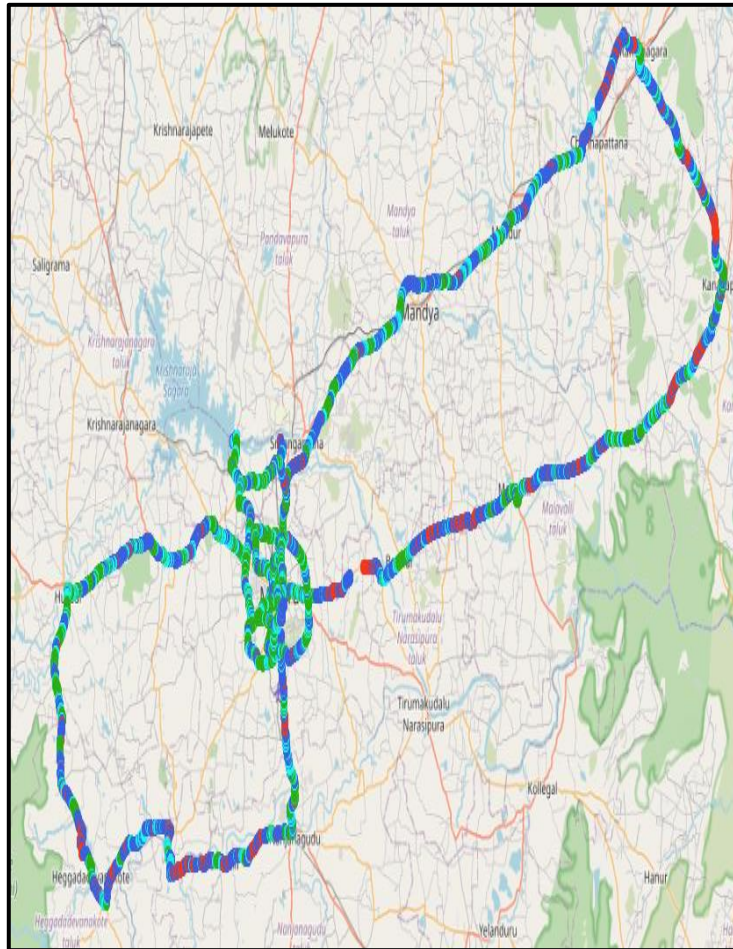
* For Voice and Data KPI's, 2G measurement is done with UE locked on 2G, 3G measurement is done with UE in Dual mode (2G & 3G) and 4G measurement is done with UE in Free Mode.

* 3G KPI's which are calculated from UE in Dual Mode (2G & 3G) includes samples and events of 2G.

* 4G KPI's which are calculated from the UE in Free Mode included samples and events of 2G & 3G.

Service	Specifications
Download	2G (Locked) - 500KB, 3G (Dual) - 20 MB, 4G (Free) - 40 MB
Upload	2G (Locked) - 100KB, 3G (Dual) - 5 MB, 4G (Free) - 10 MB
Web Browsing	3 links of e/m commerce website www.amazon.in , www.flipkart.com and PayTm
Latency	32 Bytes on www.google.com
Video Streaming	130 secs clip

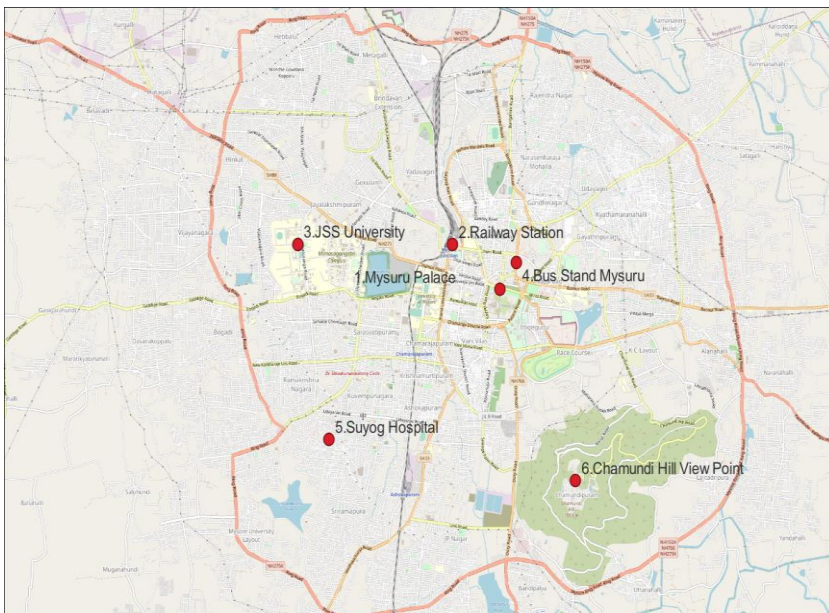
Voice & Dynamic Data Test (Data Test on Move) Drive Route



Areas covered	
Mysore	Hunsur
Bannur	Bheemanajally Kadu
Mallavalli	HD kotte
Halagur	Marchally
Kanakpura	Nanjangud
Ramnagara	Mysore Ring Road
Channapatna	Ranganabittu Bird Santury
Mandya	KRS Dam
Mysore	Brindavan Garden
Manuganahally	Mysuru Palace area

Areas covered	
DAY 1	Mysuru-Bannur-Malavalli-Halagur-Kanakpura-Ramanagara-Channapatna-Mandya-Mysuru
DAY 2	Mysuru-Hunsur-HD-Kote-Nanjanagud-Mysuru
DAY 3	Mysuru City Drive
DAY 4	Static Locations

Data Service Test- Static Locations



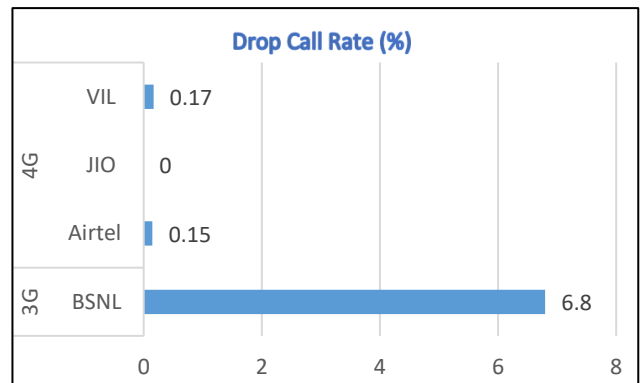
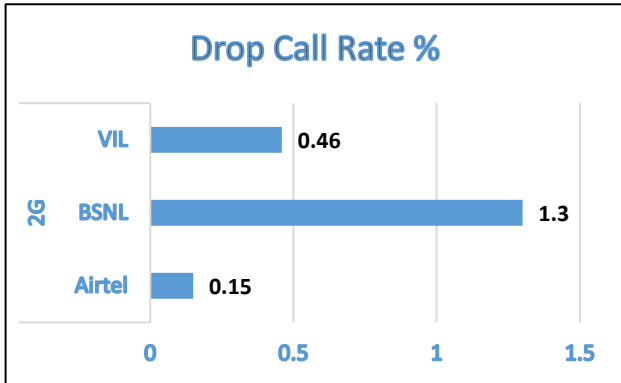
1.Mysuru Palace
2.Railway Station
3.JSS University
4.Bus Stand Mysuru
5.Suhyog Hospital
6.Chamundi Hills

Voice Calls

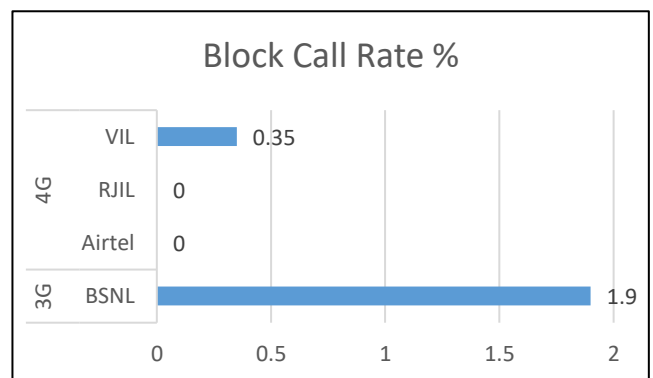
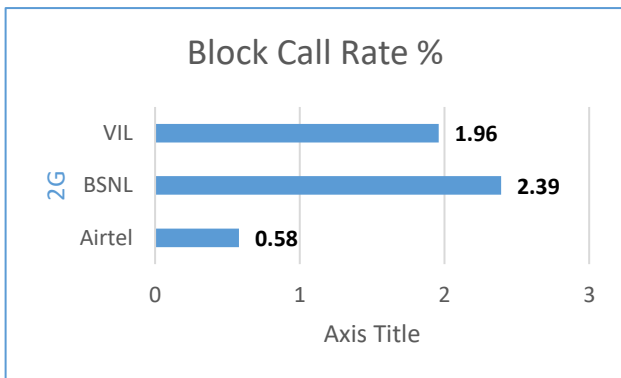
Key Observations

QoS compliance of the TSPs for Voice across technologies 2G/3G/4G-4G:

Drop Call Rate (%)



Block Call Rate (%)



KPIs	2G			3G	4G		
	Airtel	BSNL	VIL	BSNL	Airtel	RJIL	VIL
Drop Call Rate %	0.15	1.3	0.46	6.8	0.15	0	0.17
Block Call Rate %	0.58	2.39	1.96	1.9	0	0	0.35

- a) All TSPs have met the 2% QOS benchmark of Drop Call Rate except BSNL 3G.
- b) All TSPs have met the 3% QOS benchmark of Call Block

Voice Calls

Key Observations

Coverage

a) Percentage of coverage samples for 2G \geq -85 dBm.

TSPs	2G		
	Airtel	BSNL	VIL
Coverage%	95.3	60.8	74.66

b) Percentage of coverage samples for 3G \geq -90 dBm & LTE \geq -110 dBm.

TSPs	3G	4G		
	BSNL	Airtel	JIO	VIL
Coverage %	62.5	98.65	93.5	90.81

c) Percentage of time spent on 3G/4G network

TSPs	3G	4G		
	BSNL	Airtel	JIO	VIL
Time Spent on 3G/4G%	62.14	100	100	99.68

Summary

City Level Summary

Voice Call	2G		
	Airtel	BSNL	VIL
Call Attempt	686	711	660
Blocked Call Rate (%)	0.58	2.39	1.96
CSSR% (Accessibility)	99.42	97.61	98.04
Drop Call Rate (%)	0.15	1.3	0.46
Mobility HOSR (%)	99.14	90.56	95.71
Rx Quality (%)	95.51	93.3	95.99

Voice Call	3G/4G			
	BSNL 3G	Airtel 4G	JIO 4G	VIL 4G
Call Attempt	463	688	754	561
Blocked Call Rate (%)	1.9	0	0	0.35
CSSR% (Accessibility)	98.1	100	99.87	99.65
Drop Call Rate (%)	6.8	0.15	0	0.17
Mobility HOSR (%)	82.2	99.71	98.94	99.7
Rx Quality (%)	73.6	95.79	90.22	96.12

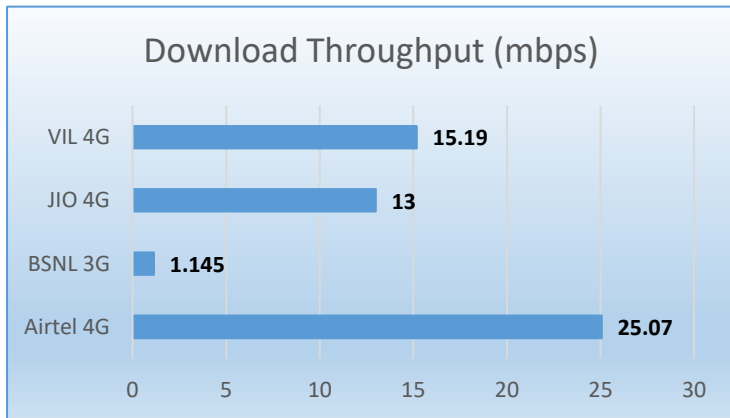
Data Services Static

Key Observations

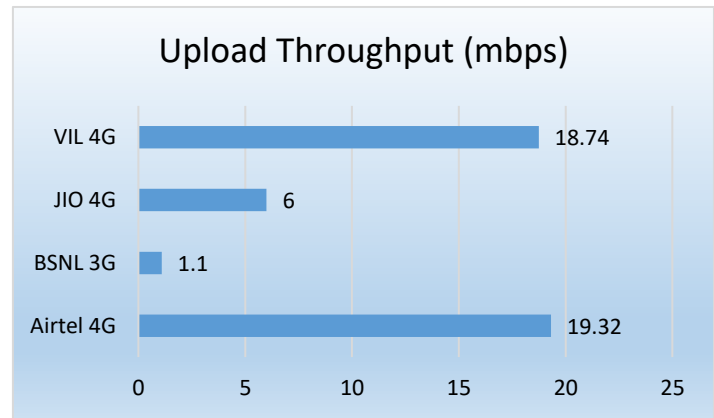
Data was tested at 6 locations .Following services were tested: Data Download/Upload, Latency (www.google.com), and Web browsing (Flipkart, Amazon, PayTm)

Data Download, Upload Performance (Mbps), Web Browsing delay, Video Streaming and Latency 3G/4G

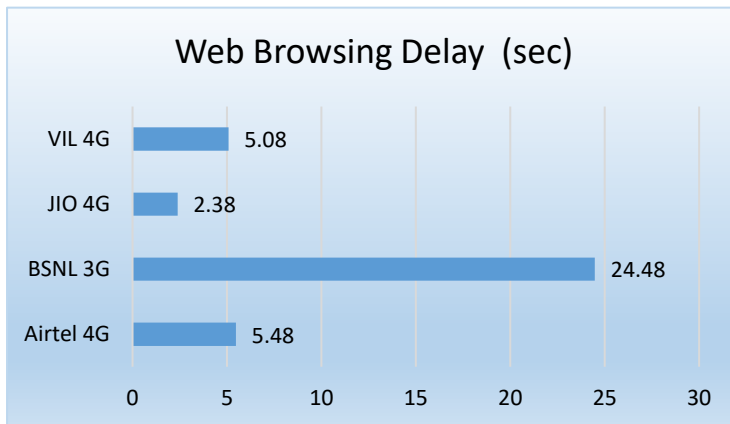
Download Throughput (mbps)



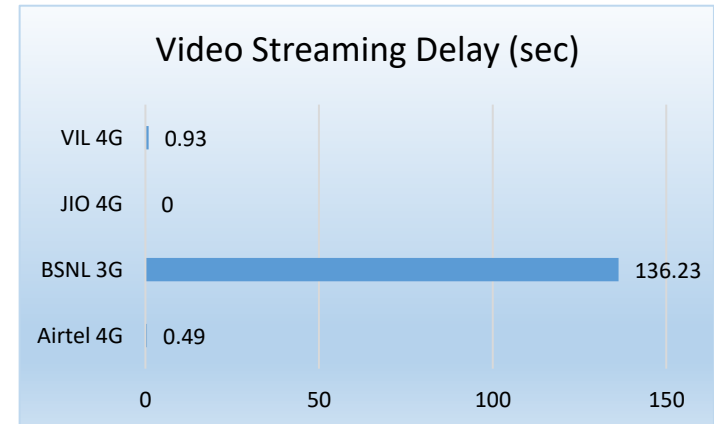
Upload Throughput (mbps)



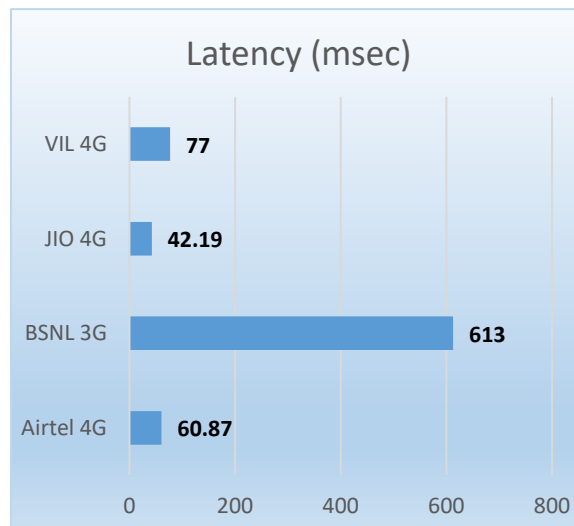
Web Browsing Delay (sec)



Video Streaming Delay (sec)



Latency (msec)



Summary

City Level Summary(contd.)

Data Services Static	2G		
	Airtel	BSNL	VIL
Download Throughput (kbps)	133.77	83.56	114.65
Upload Throughput (kbps)	10.34	41.15	79.87
Web Browsing Delay (sec)	74.46	72.58	63.53
Latency (msec)	243	624	158

Data Services Static	3G/4G			
	BSNL 3G	Airtel 4G	JIO 4G	VIL 4G
Download Throughput (mbps)	1.145	25.07	13	15.19
Upload Throughput (mbps)	1.1	19.32	6	18.74
Web Browsing Delay (sec)	24.48	5.48	2.38	5.08
Video Streaming Delay (sec)	136.23	0.49	0	0.93
Latency (msec)	613	60.87	42.19	77

Data Services Dynamic (Data Test on Move)	3G/4G			
	BSNL 3G	Airtel 4G	JIO 4G	VIL 4G
Download Throughput (mbps)	2.012	11.16	11.37	16.07
Upload Throughput (mbps)	0.875	11.41	1.93	0.18

Summary

City Level Data Services Static(contd.)

Data Services Static – Mysuru Palace	2G		
	Airtel	BSNL	VIL
Download Throughput (kbps)	190.62	35.39	94.78
Upload Throughput (kbps)	14.34	36.732	62.86
Web Browsing Delay (sec)	114.77	83.53	72.6
Latency (ms)	253.2	568	130

Data Services Static –Mysuru Palace	4G			
	BSNL 3G	Airtel	JIO	VIL
Download Throughput (Mbps)	1.02	11.87	8.71	12.9
Upload Throughput (Mbps)	0.6	23.33	4.38	12.074
Web Browsing Delay (sec)	32.2	4.69	2.45	5.8
Video Streaming Delay (sec)	137.2	0.26	0	1
Latency (ms)	649	55.6	55.44	83

Data Services Static – Mysuru Railway Station	2G		
	Airtel	BSNL	VIL
Download Throughput (kbps)	162.06	99.35	125.7
Upload Throughput (kbps)	7.74	25.52	89.9
Web Browsing Delay (sec)	59.18	70.06	51.6
Latency (msec)	243	519	150

Data Services Static - Mysuru Railway Station	4G			
	BSNL 3G	Airtel	JIO	VIL
Download Throughput (Mbps)	1.76	51.6	7.32	12.36
Upload Throughput (Mbps)	0.98	32.65	9.17	20.5
Web Browsing Delay (sec)	22.06	5.39	2.31	4.66
Video Streaming Delay (sec)	134.6	0.25	0	0.86
Latency (ms)	575	76.2	38	68.2

Summary

City Level Data Services Static(contd.)

Data Services Static – JSS University	2G		
	Airtel	BSNL	VIL
Download Throughput (kbps)	131.3	141.16	141.88
Upload Throughput (kbps)	11.84	25.22	88.156
Web Browsing Delay (sec)	50.05	64.60	56.8
Latency (ms)	225	613.60	202

Data Services Static- JSS University	4G			
	BSNL 3G	Airtel	JIO	VIL
Download Throughput (Mbps)	0.95	38.69	19.39	32.7
Upload Throughput (Mbps)	1.47	28.02	4.58	12.57
Web Browsing Delay (sec)	21.60	6.09	2.22	5.12
Video Streaming Delay (sec)	135.80	0	0	0.92
Latency (ms)	606.20	51	49	70

Data Services Static – Mysuru Bus Stand	2G		
	Airtel	BSNL	VIL
Download Throughput (kbps)	81.02	78.62	106.34
Upload Throughput (kbps)	13.62	58.52	86.888
Web Browsing Delay (sec)	82.84	69.86	77.8
Latency (msec)	250	776	147

Data Services Static – Mysuru Bus Stand	4G			
	BSNL 3G	Airtel	JIO	VIL
Download Throughput (Mbps)	1.15	13.77	9.52	21.82
Upload Throughput (Mbps)	1.11	23.05	7.63	18.75
Web Browsing Delay (sec)	24.26	6.05	2.32	5.4
Video Streaming Delay (sec)	135.6	0.11	0	0.98
Latency (ms)	594	60	41.6	80

Summary

City Level Data Services Static(contd.)

Data Services Static – Suyog Hospital	2G		
	Airtel	BSNL	VIL
Download Throughput (kbps)	141.86	103.74	99.56
Upload Throughput (kbps)	6.04	55.59	83.17
Web Browsing Delay (sec)	88.21	67.20	60.2
Latency (ms)	253	546.80	149

Data Services Static – Suyog Hospital	3G/4G			
	BSNL 3G	Airtel	JIO	VIL
Download Throughput (Mbps)	0.55	14.32	7.97	6.78
Upload Throughput (Mbps)	1.24	5.05	3	26.5
Web Browsing Delay (sec)	23.93	5.04	2.84	4.62
Video Streaming Delay (sec)	136.8	0.52	0	0.96
Latency (ms)	640	52	38	91

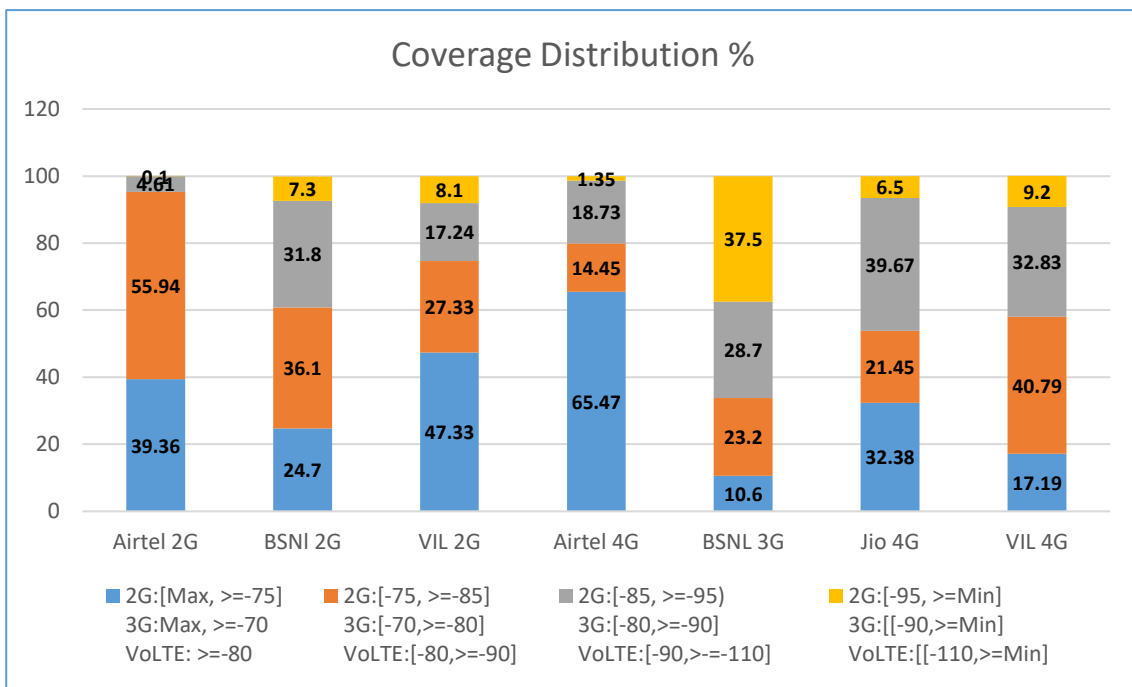
Data Services Static – Chamundi Hill Viewpoint	2G		
	Airtel	BSNL	VIL
Download Throughput (kbps)	95.78	43.15	119.62
Upload Throughput (kbps)	8.46	45.33	68.26
Web Browsing Delay (sec)	51.7	80.26	62.2
Latency (msec)	232.6	723.00	169

Data Services Static – Chamundi Hill Viewpoint	3G/4G			
	BSNL 3G	Airtel	JIO	VIL
Download Throughput (Mbps)	1.45	20.16	25.08	4.59
Upload Throughput (Mbps)	1.24	3.82	7.27	22.06
Web Browsing Delay (sec)	22.86	5.59	2.19	4.86
Video Streaming Delay (sec)	137.2	1.81	0	0.89
Latency (ms)	612	70	31	70

I. Coverage Details

RF Coverage relates to the geographical footprint within the system that has sufficient RF signal strength to provide for a call session. The Coverage rate is calculated on the basis of % of samples in which the Rx level ≥ -85 dBm, RSCP is ≥ -90 dBm & RSRP ≥ -110 dBm. The details are as follows.

TSP	Coverage Rate %
Airtel 2G	95.3
BSNL 2G	60.8
VIL 2G	74.66
Airtel 4G	98.65
BSNL 3 G	62.5
Jio 4G	93.5
VIL 4G	90.81

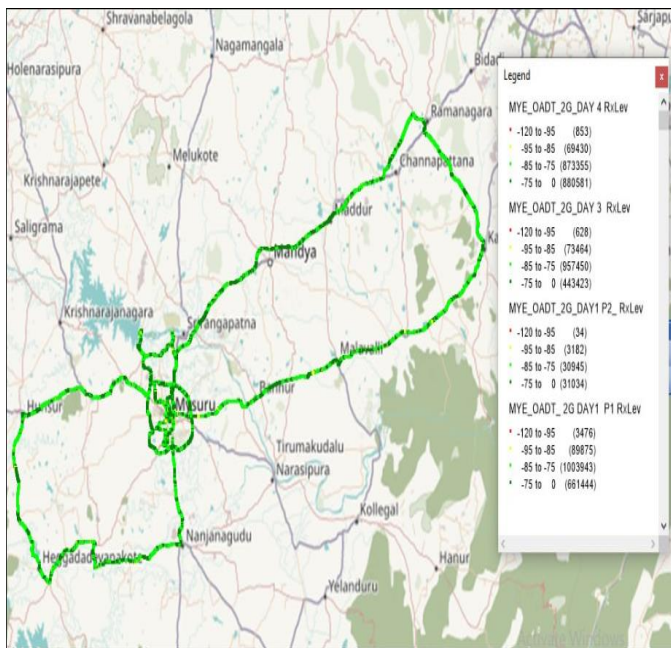


I. Coverage Details

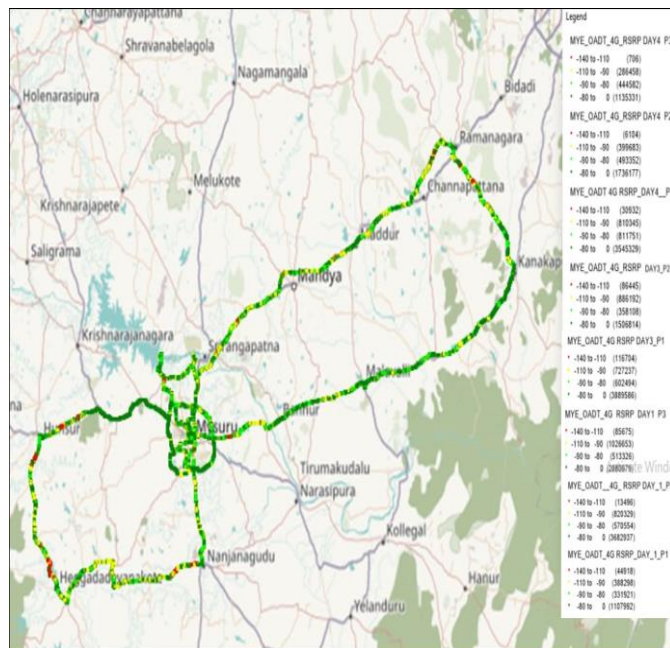
AIRTEL

Technology	Coverage Rate %
2G	95.30
4G	98.65

2G



4G



2G

Overall RxLevel	# Samples	% PDF
[Max, >=-75]	2016482	39.36
[-75, >=-85)	2865693	55.94
[-85, >=-95)	235951	4.61
[-95, >=Min)	4991	0.10
Total	5123117	100

4G/VoLTE

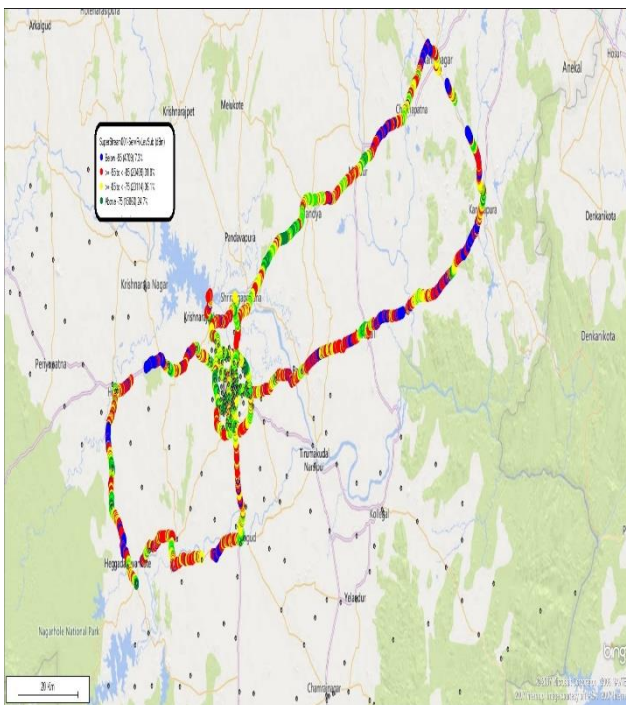
Overall RSRP	# Samples	% PDF
[Max, >=-80]	18684845	65.47
[-80, >=-90)	4124998	14.45
[-90, >=-110)	5345195	18.73
[-110, >=Min)	384980	1.35
Total	28540018	100

I. Coverage Details

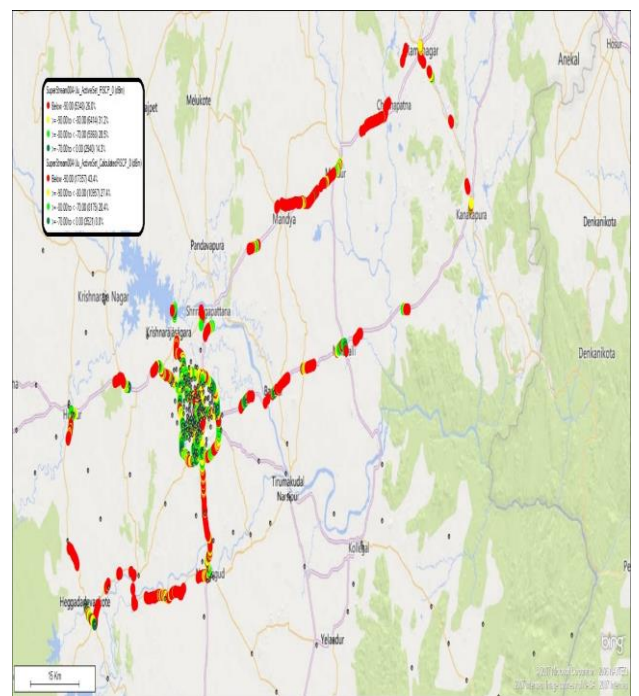
BSNL

Technology	Coverage Rate %
2G	60.8
3G	62.5

2G



3G



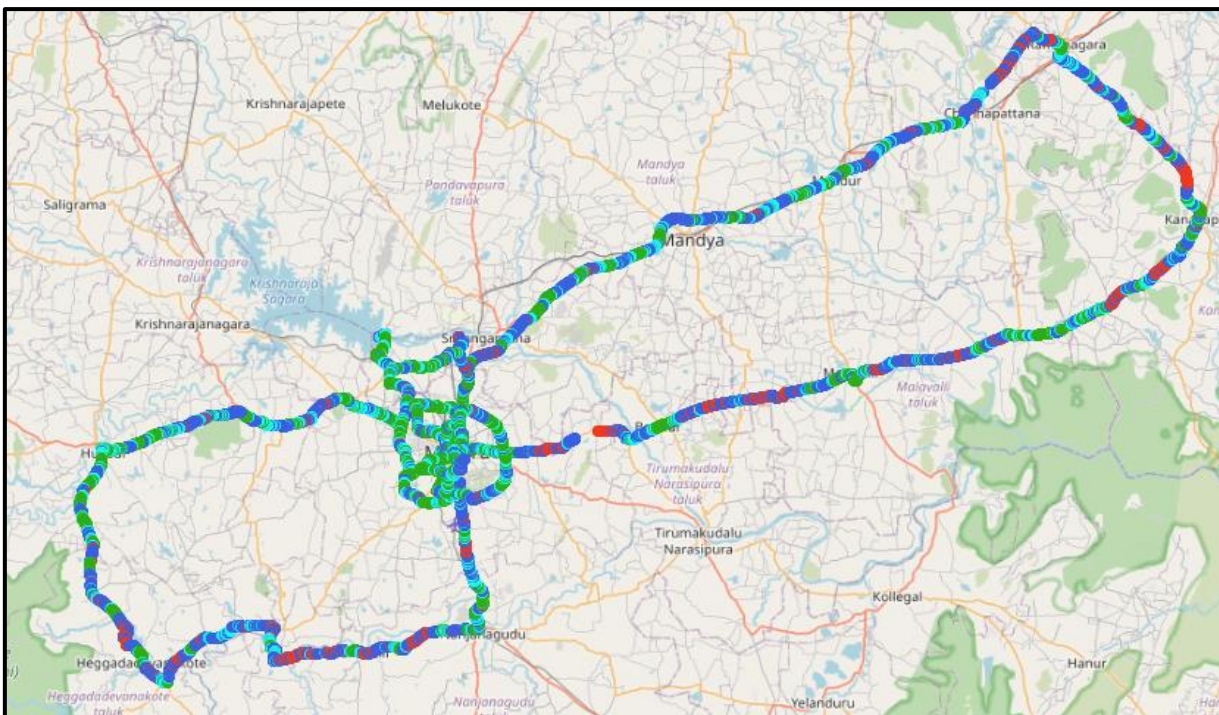
2G		
Overall RxLevel	# Samples	% PDF
[Max, >=-75]	15860	24.7
[-75, >=-85)	23114	36.1
[-85, >=-95)	20409	31.8
[-95, >=Min)	4709	7.3
Total	64092	99.9

3G		
Overall RSCP	# Samples	% PDF
[Max, >=-70]	6461	10.6
[-70, >=-80)	14043	23.2
[-80, >=-90)	17371	28.7
[-90, >=Min)	22705	37.5
Total	60580	100

I. Coverage Details

JIO

Technology	Coverage Rate %
4G	93.50



4G/VoLTE		
Overall RSRP	# Samples	% PDF
[Max, >=-80]	26000	32.38
[-80, >=-90)	17220	21.45
[-90, >=-110)	31848	39.67
[-110, >=Min)	5222	6.50
Total	82290	100

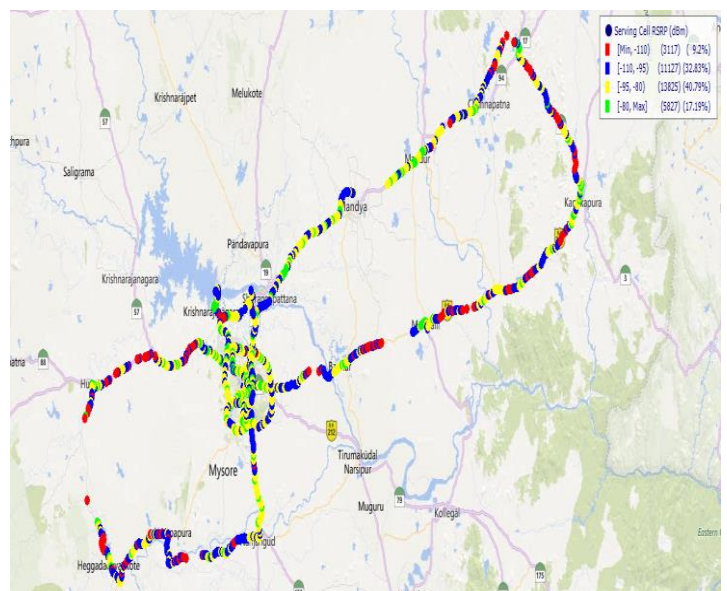
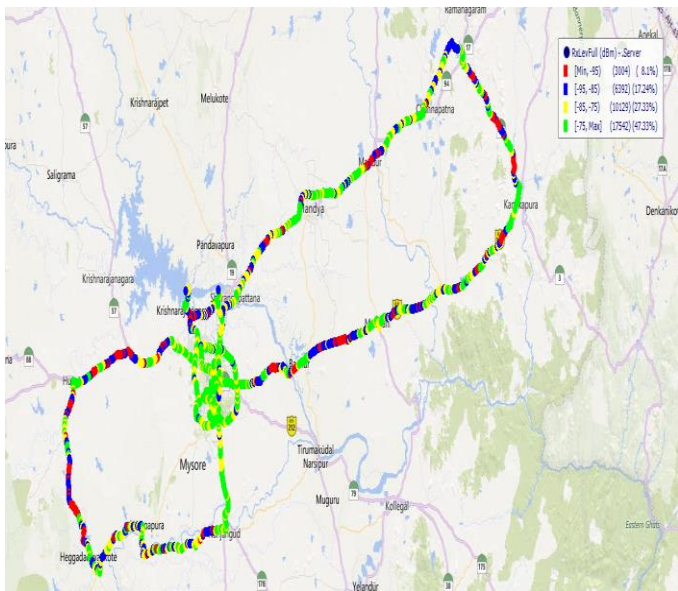
I. Coverage Details

VIL

Technology	Coverage Rate %
2G	74.66
4G	90.81

2G

4G



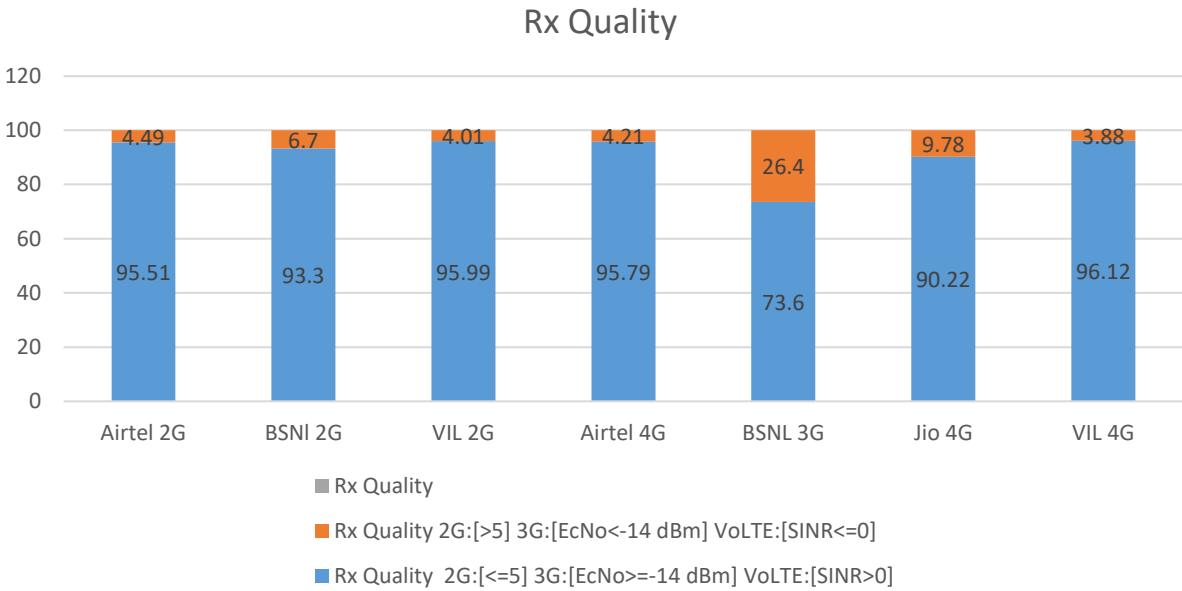
2G		
Overall RxLevel	# Samples	% PDF
[Max, >=-75]	17542	47.33
[-75, >=-85)	10129	27.33
[-85, >=-95)	6392	17.24
[-95, >=Min)	3004	8.1
Total	37067	100

4G/VoLTE		
Overall RSRP	# Samples	% PDF
[Max, >=-80]	5827	17.19
[-80, >=-90)	13825	40.79
[-90, >=-110)	11127	32.83
[-110, >=Min)	3117	9.2
Total	24952	100

II. Quality Details

For measuring voice quality, as per the QoS norms, RxQual ≤ 5 for GSM TSPs, EcNo ≥ -14 dBm for 3G TSP and SINR > 0 in case of 4G is considered to be good, where as quality beyond this benchmark is considered to be bad. The benchmark should usually be $\geq 95\%$.

TSP	Rx Quality %
Airtel 2G	95.51
BSNL 2G	93.3
VIL 2G	95.99
Airtel 4G	95.79
BSNL 3G	73.6
Jio 4G	90.22
VIL 4G	96.12

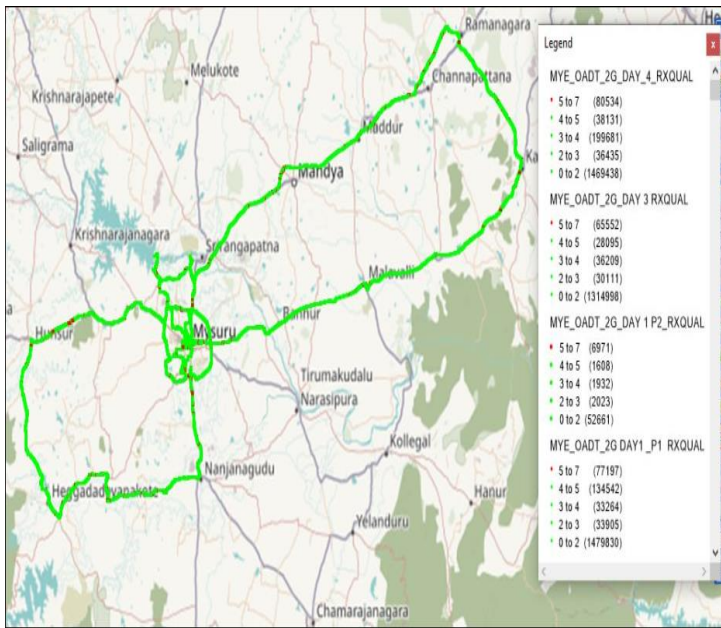


II. Quality Details

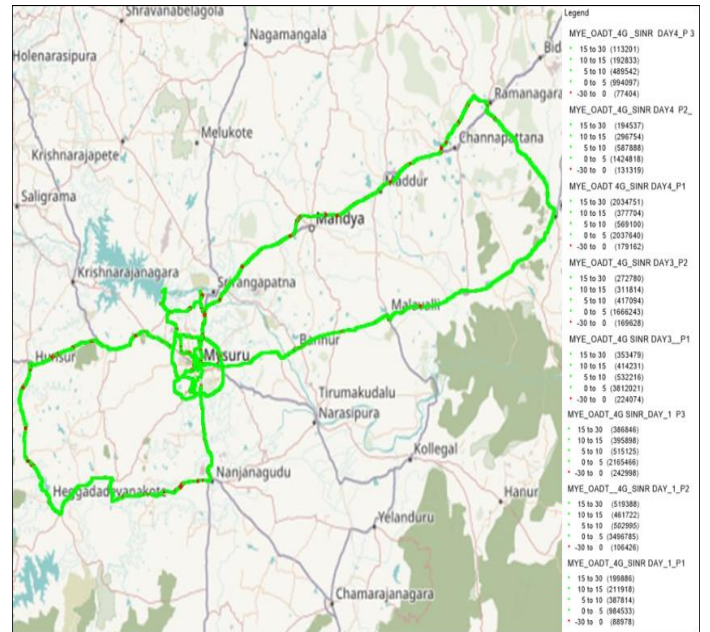
Airtel

Technology	Rx Quality %
2G	95.51
4G	95.79

2G



4G



Overall Rx Quality	# Samples	% PDF
(Min, <=2)	4316927	84.26
(2, <=3)	102474	2.00
(3, <=4)	271086	5.29
(4, <=5)	202376	3.95
(5, <=Max)	230254	4.49
Total	5123117	100

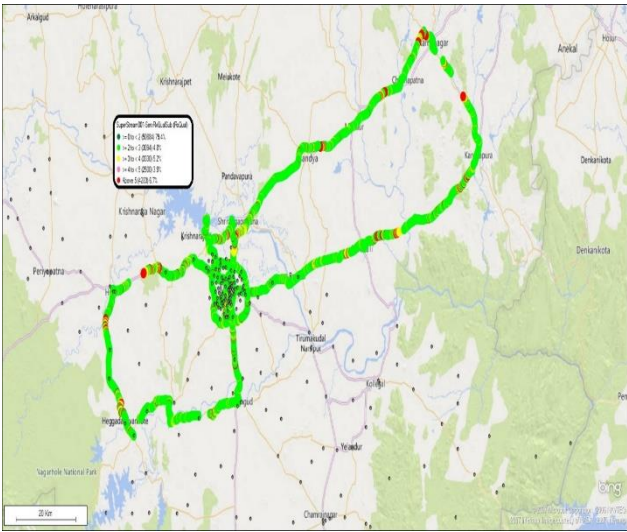
Overall SINR	# Samples	% PDF
(Min, <=0)	1199989	4.21
(0, <=5)	16581603	58.14
(5, <=10)	4001774	14.03
(10, <=15)	2662874	9.34
(15, <=Max)	4074868	14.29
Total	28521108	100

II. Quality Details

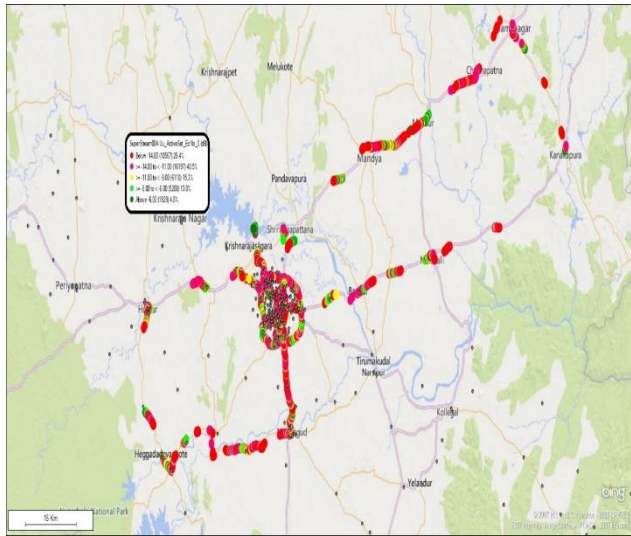
BSNL

Technology	Rx Quality %
2G	93.3
3G	73.6

2G



3G



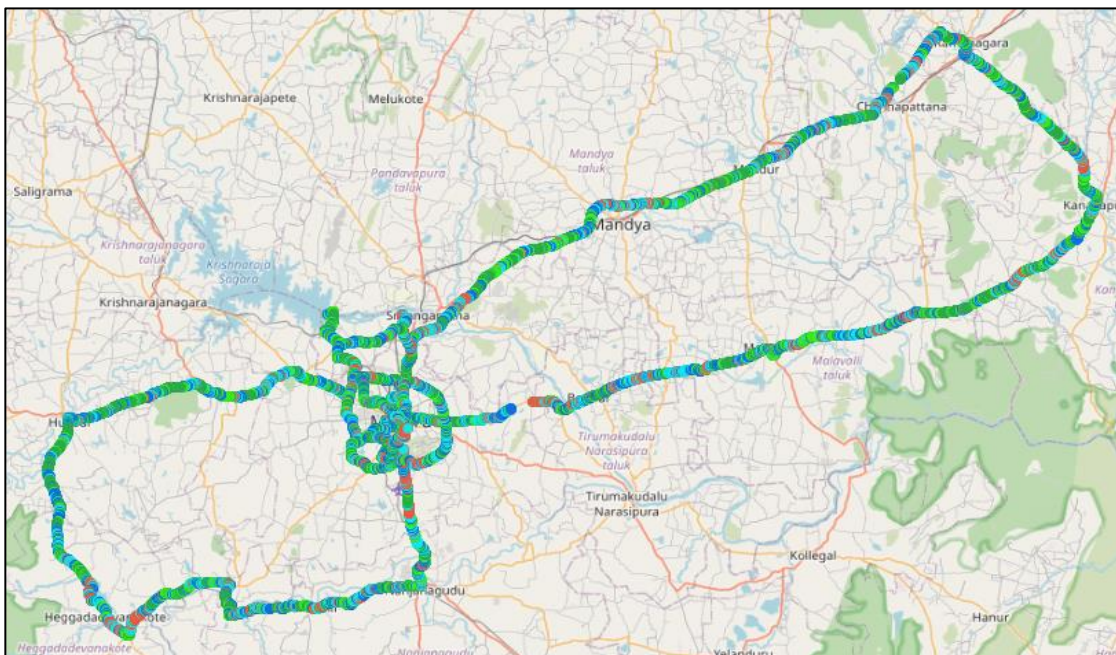
Overall Rx Quality	# Samples	% PDF
(Min, <=2)	50884	79.4
(2, <=3)	3094	4.8
(3, <=4)	3330	5.2
(4, <=5)	2500	3.9
(5, <=Max)	4283	6.7
Total	64091	100

Overall EcNo	# Samples	% PDF
(Max, <=-6)	1929	4.8
(-6, <=-9)	5208	13.0
(-9, <=-11)	6110	15.3
(-11, <=-14)	16197	40.5
(-14, <= Min)	10567	26.4
Total	40011	100

II. Quality Details

JIO

Technology	Rx Quality (%)
4G/4G	90.22



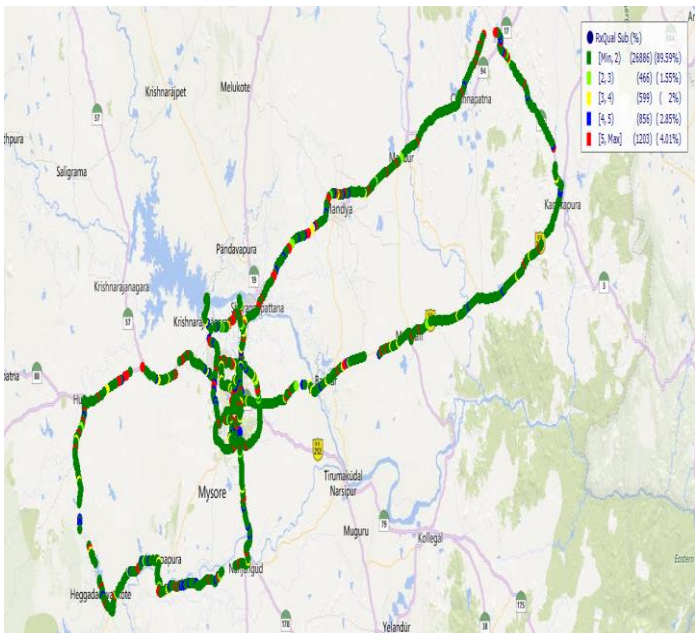
Overall SINR	# Samples	% PDF
(Min, <=0)	7853	9.78
(0, <=5)	17194	21.41
(5, <=10)	16415	20.44
(10, <=15)	19607	24.43
(15, <=Max)	19221	23.94
Total	82290	100

II. Quality Details

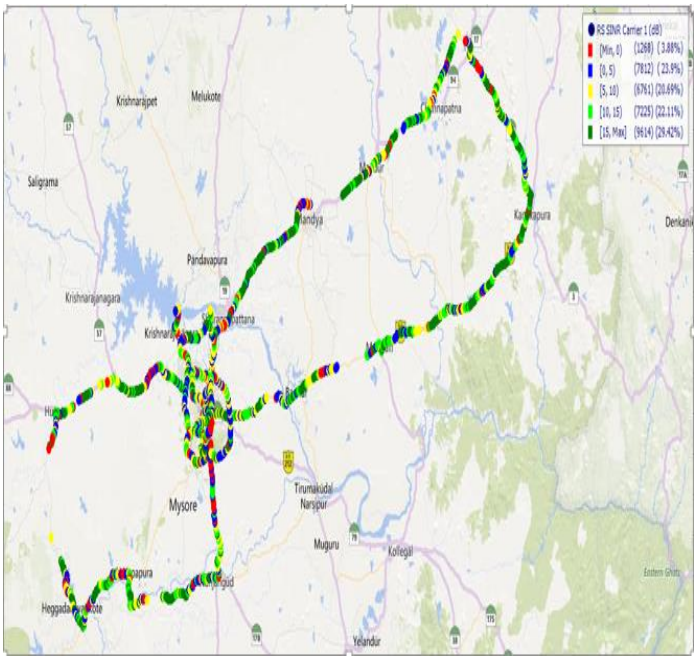
VIL

Technology	Rx Quality %
2G	95.99
4G	96.12

2G



4G

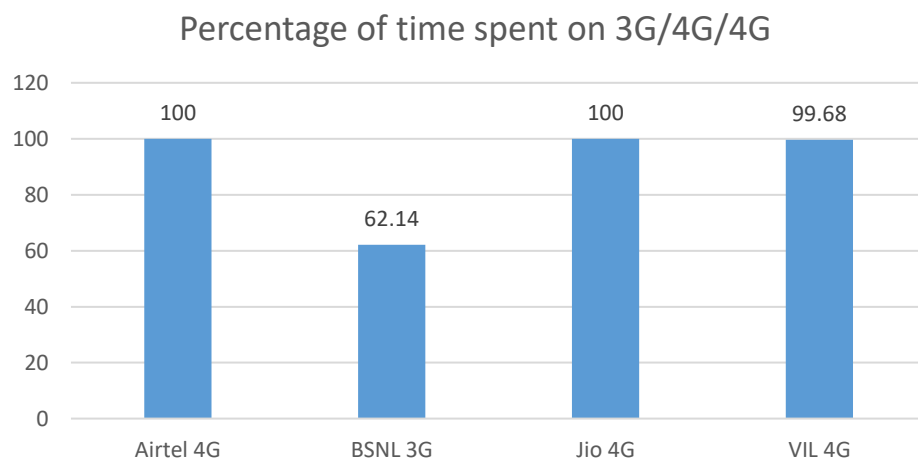


Overall Rx Quality	# Samples	% PDF
(Min, <=2)	26886	89.59
(2, <=3)	466	1.55
(3, <=4)	599	2
(4, <=5)	856	2.85
(5, <=Max)	1203	4.01
Total	30010	100

Overall SINR	# Samples	% PDF
(Min, <=0)	1268	3.88
(0, <=5)	7812	23.9
(5, <=10)	6761	20.69
(10, <=15)	7225	22.11
(15, <=Max)	9614	29.42
Total	32680	100

III. Technology Details

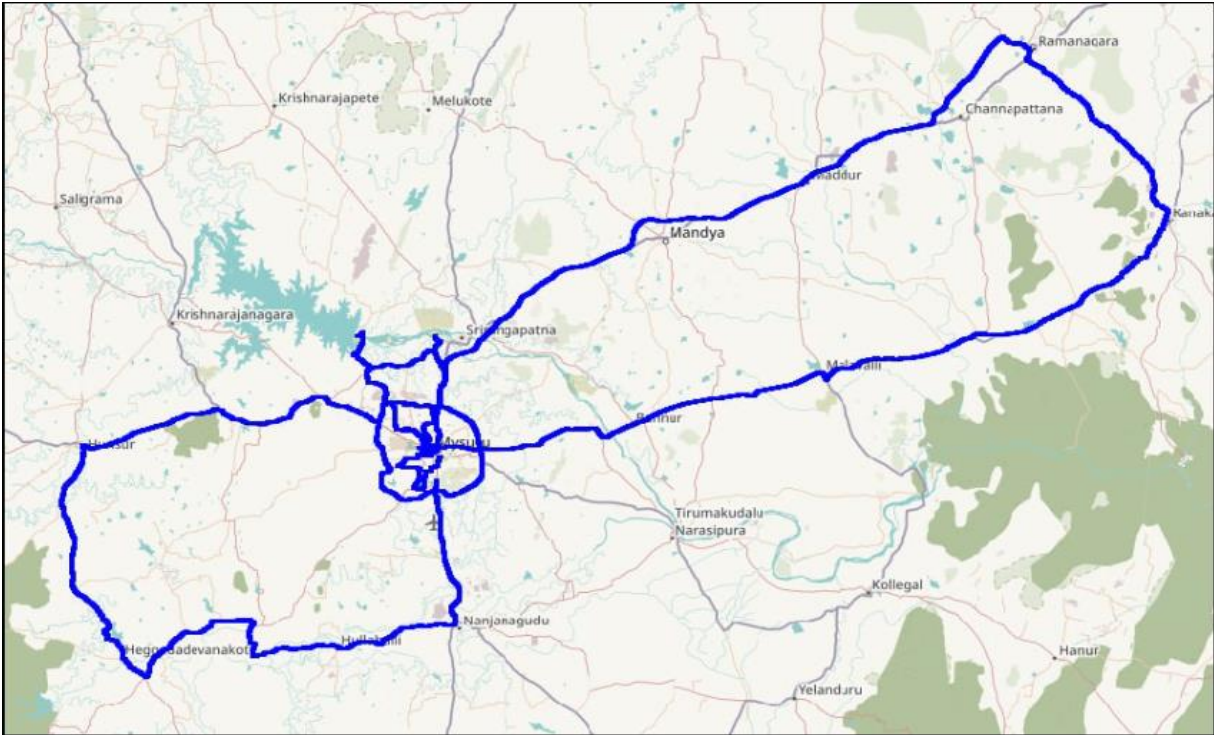
TSP	Time Spent on 3G/4G %
Airtel 4G	100
BSNL 3G	62.14
Jio 4G	100
VIL 4G	99.68



III. Technology Details

Airtel

Technology	Time Spent %
4G	100

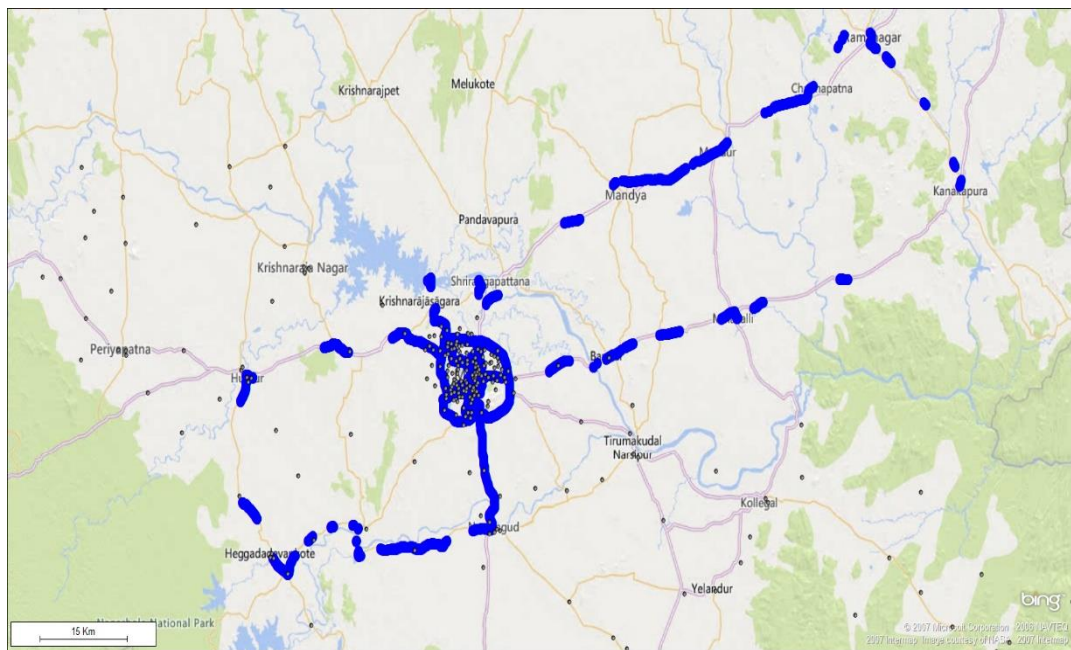


III. Technology Details

BSNL

Technology	Time Spent %
3G	62.14

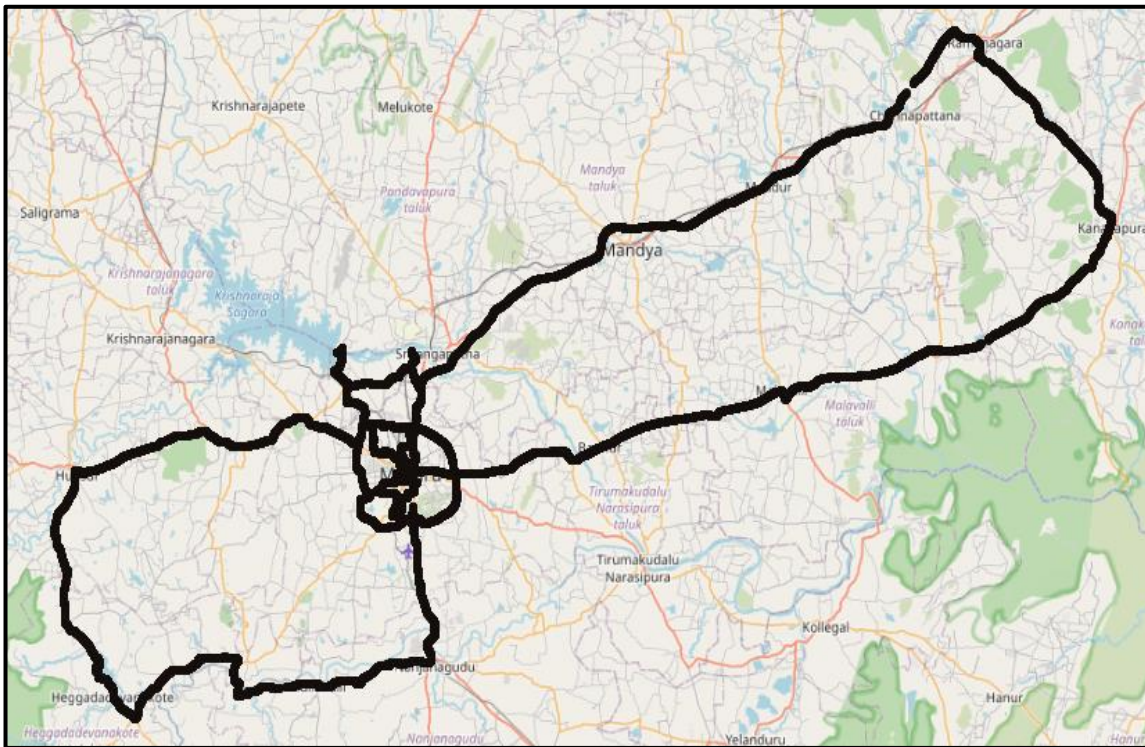
Technology Plot of complete SSA (3G)



III. Technology Details

JIO

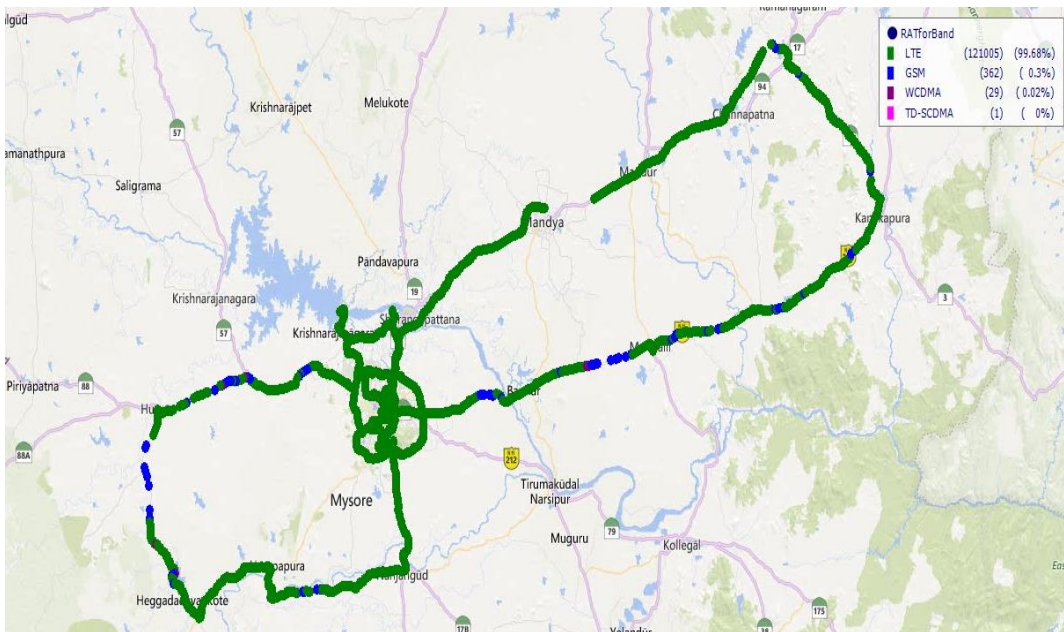
Technology	Time Spent %
4G	100



III. Technology Details

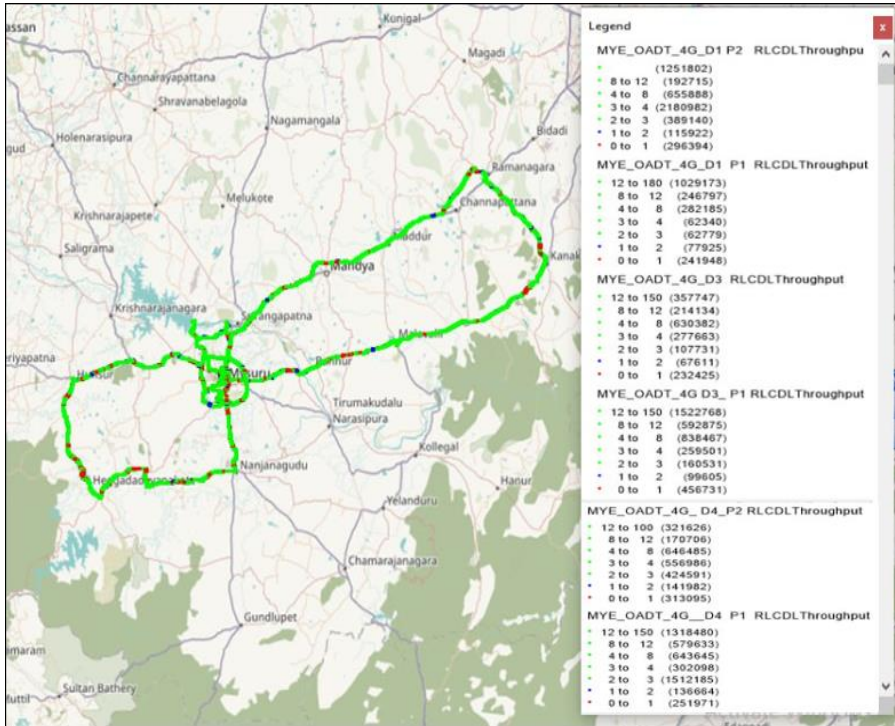
VIL

Technology	Time Spent
4G	99.68

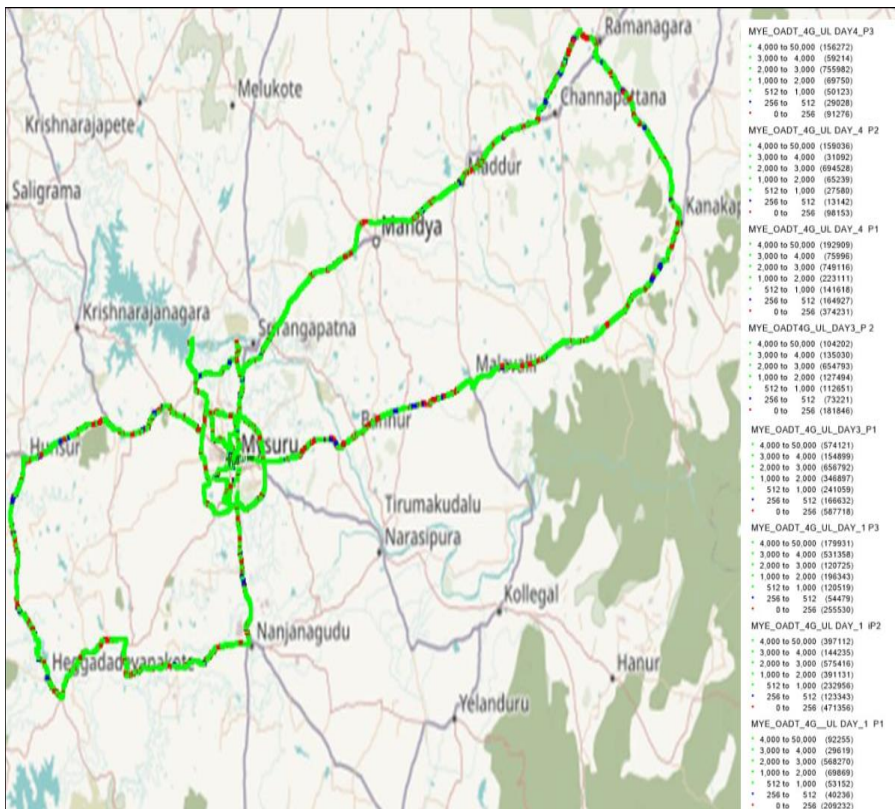


IV. Dynamic Data Test (Data Test on Move) - 4G DL/UL Details

Airtel



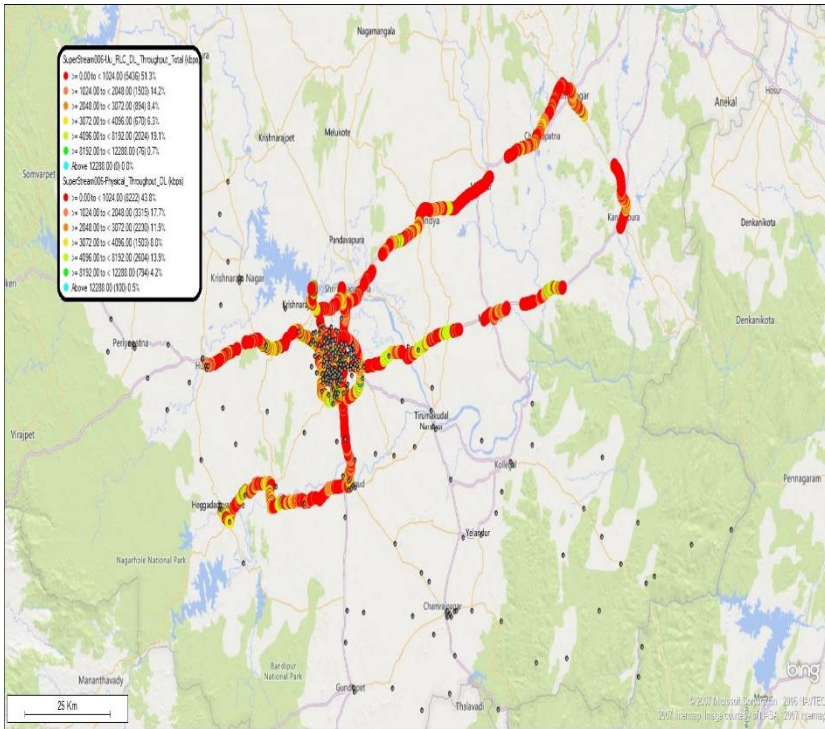
DL throughput	No. of Samples	%
0 to 1 Mbps	1793464	8.87
1 to 2 Mbps	639709	3.16
2 to 3 Mbps	2656957	13.14
3 to 4 Mbps	3639570	18.00
4 to 8 Mbps	3697052	18.28
8 to 12 Mbps	1996860	9.87
>12 Mbps	5801596	28.68
Total	20225208	100



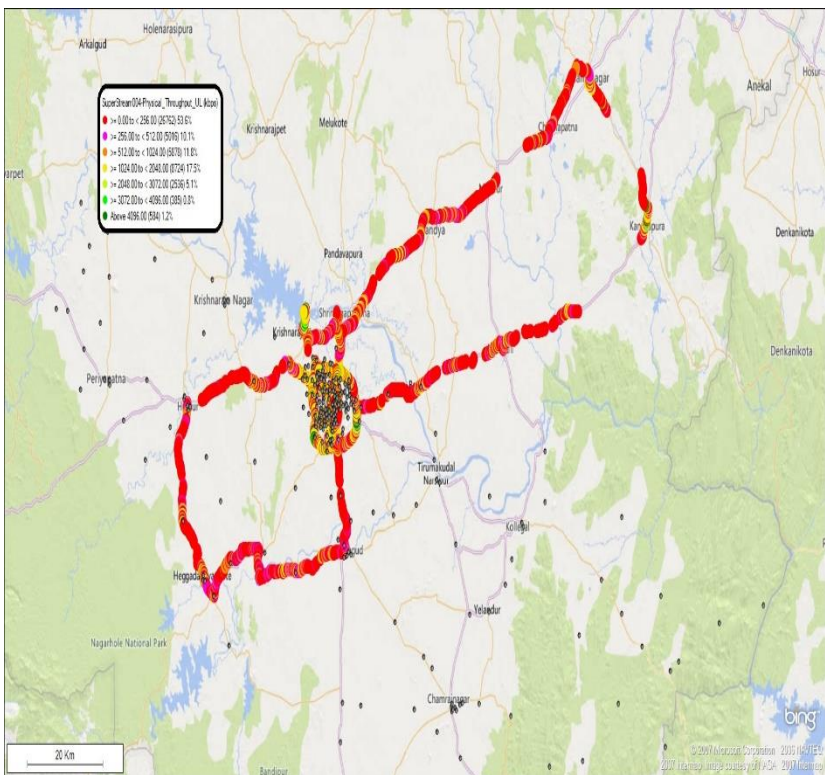
UL throughput	No. of samples	%
0 to 256 Kbps	2269342	16.86
250 to 512 Kbps	665008	4.94
512 Kbps to 1 Mbps	979658	7.28
1 to 2 Mbps	1489834	11.07
2 to 3 Mbps	4775622	35.47
3 to 4 Mbps	1427943	10.61
>4 Mbps	1855838	13.78
Total	13463245	100

IV. Dynamic Data Test(Data Test on Move)- 3G/4G DL/UL Details

BSNL



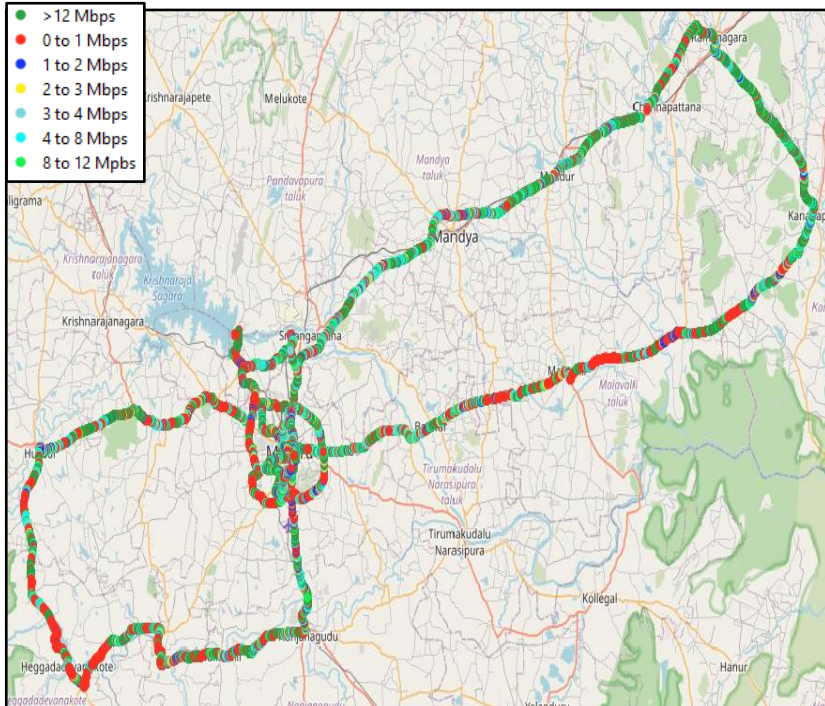
DL throughput	No. of Samples	%
0 to 1 Mbps	13658	46.50
1 to 2 Mbps	4818	16.40
2 to 3 Mbps	3124	10.60
3 to 4 Mbps	2173	7.4
4 to 8 Mbps	4628	15.8
8 to 12 Mbps	870	3.0
>12 Mbps	100	0.3
Total	29371	100.0



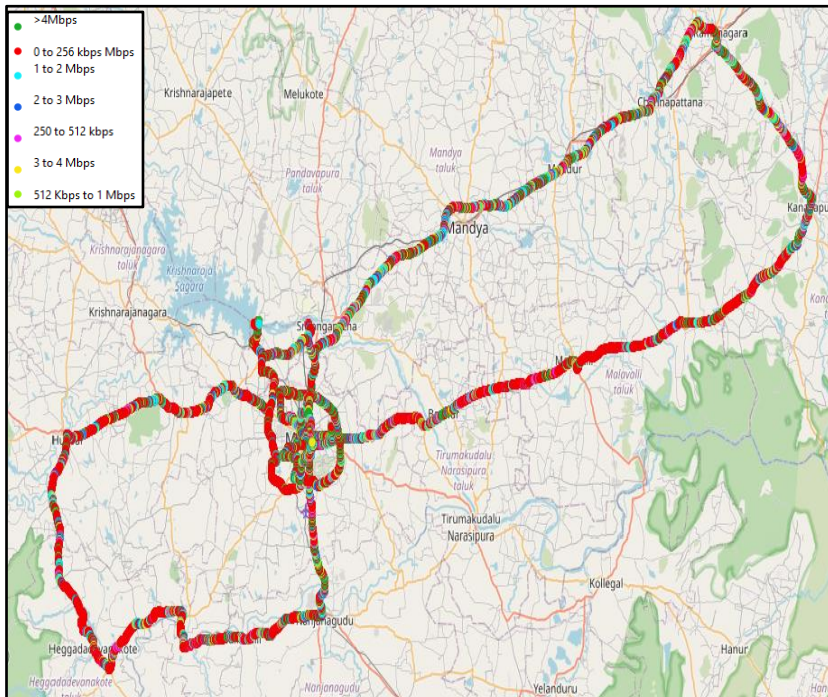
UL throughput	No. of Samples	%
0 to 1 Mbps	26762	53.6
1 to 2 Mbps	5016	10.1
2 to 3 Mbps	5878	11.8
3 to 4 Mbps	8724	17.5
4 to 8 Mbps	2536	5.1
8 to 12 Mbps	385	0.8
>12 Mbps	584	1.2
Total	49885	100

IV. Dynamic Data Test(Data Test on Move)- 4G DL/UL Details

JIO



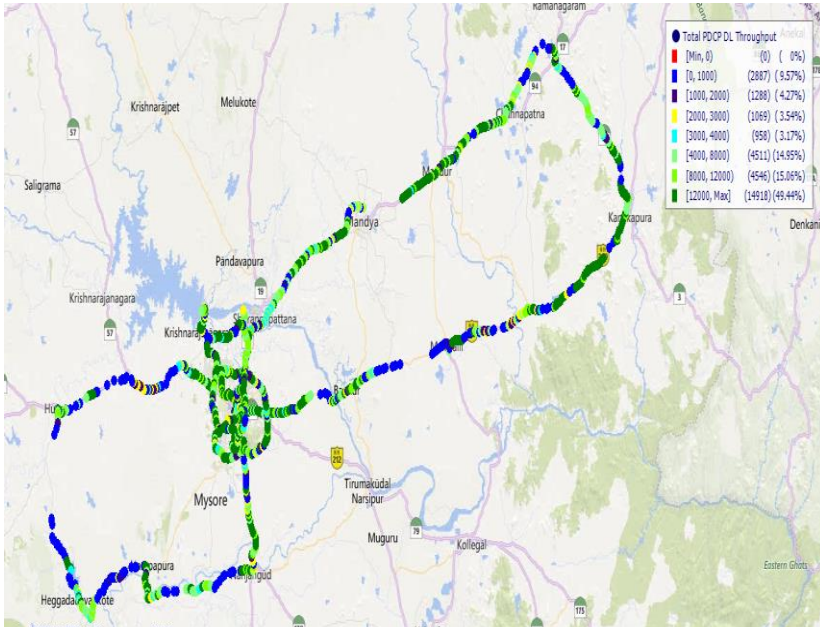
DL throughput	No. of Samples	%
0 to 1 Mbps	11274	18.00
1 to 2 Mbps	3837	6.33
2 to 3 Mbps	3392	5.60
3 to 4 Mbps	3127	5.16
4 to 8 Mbps	9667	15.95
8 to 12 Mbps	6954	11.47
>12 Mbps	22362	36.89
Total	60613	100



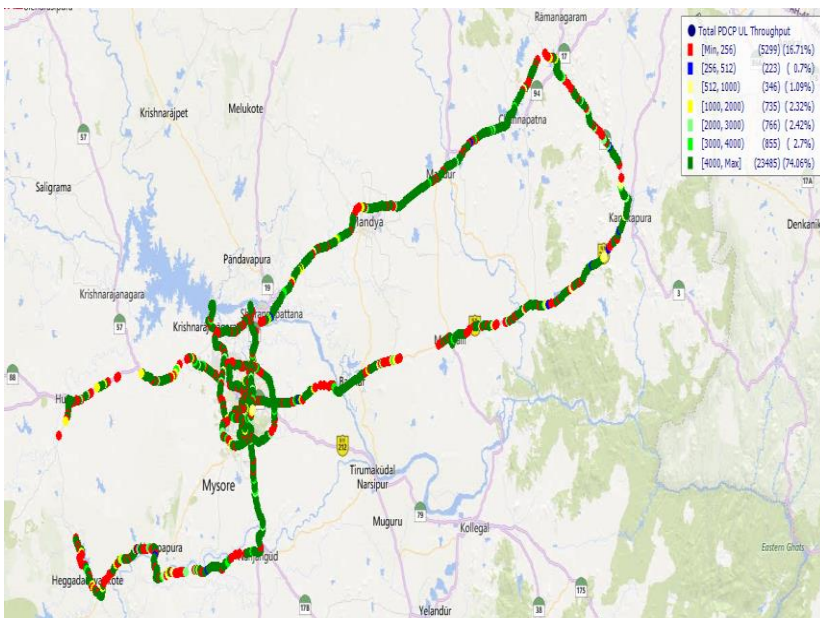
UL throughput	No. of samples	%
0 to 256 kbps Mbps	28907	44.57
256 to 512 kbps	2924	4.51
512 Kbps to 1 Mbps	4580	7.06
1 to 2 Mbps	7801	12.03
2 to 3 Mbps	5599	8.63
3 to 4 Mbps	3599	5.55
>4Mbps	11441	17.64
Total	64851	100

IV. Dynamic Data Test (Data Test on Move)- 4G DL/UL Details

VIL



DL throughput	No. of Samples	%
0 to 1 Mbps	2887	9.57
1 to 2 Mbps	1288	4.27
2 to 3 Mbps	1069	3.54
3 to 4 Mbps	958	3.17
4 to 8 Mbps	4511	14.95
8 to 12 Mbps	4546	15.06
>12 Mbps	14918	49.44
Total	30177	100

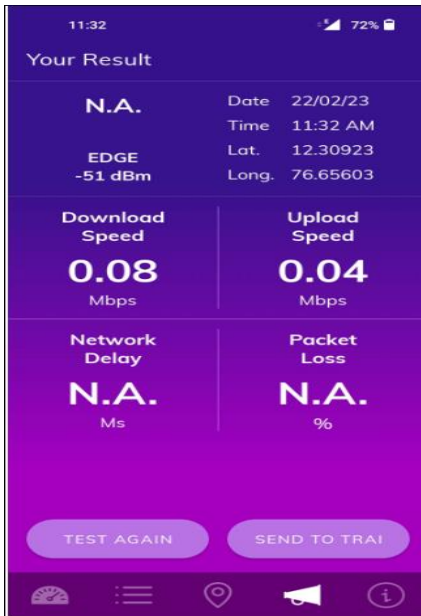


UL throughput	No. of samples	%
0 to 256 Kbps	5299	16.71
250 to 512 Kbps	223	0.7
512 Kbps to 1 Mbps	346	1.09
1 to 2 Mbps	735	2.32
2 to 3 Mbps	766	2.42
3 to 4 Mbps	855	2.7
>4Mbps	23485	74.06
Total	31709	100

V. TRAI My Speed App Test Details-2G

Technology-2G	Mysuru Palace	Mysuru Railway Station	JSS University	Mysuru Bus Station	Suyog Hospital	Chamundi Hills Viewpoint
Download Speed (Mbps)	0.08	0.08	0.13	0.03	0.02	0.04
Upload Speed (Mbps)	0.04	0.02	0.02	0.02	0.02	0.01
Latency	0	0	0	0	0	0

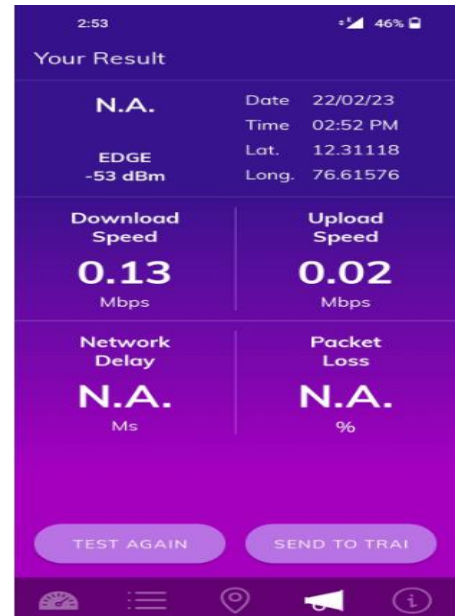
Mysuru Palace



Mysuru Railway Station



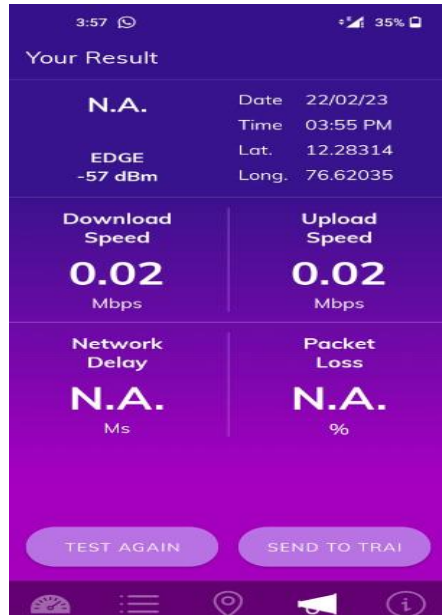
JSS University



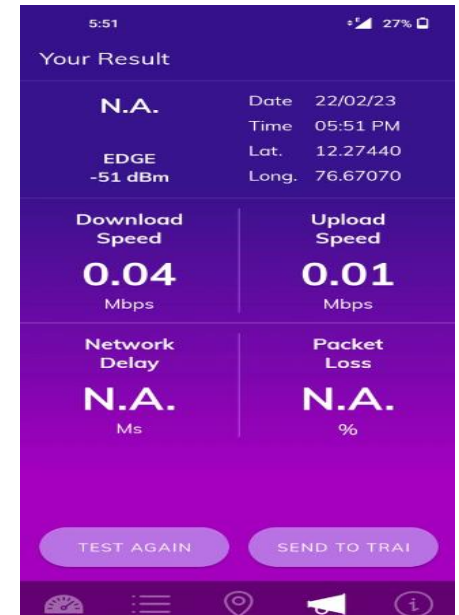
Mysuru Bus Station



Suyog Hospital



Chamundi Hills Viewpoint



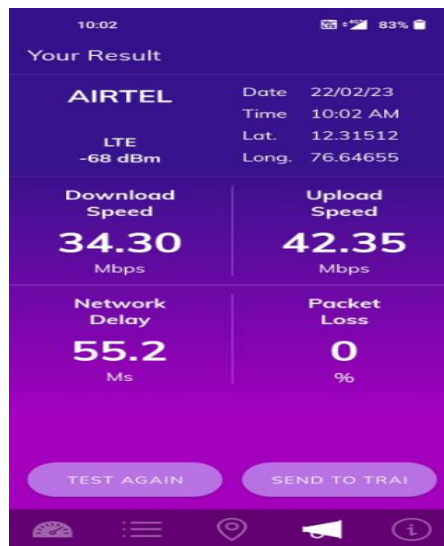
V. TRAI My Speed App Test Details-4G

Techology-4G/VoLTE	Mysuru Palace	Mysuru Railway Station	JSS University	Mysuru Bus Station	Suyog Hospital	Chamundi Hills Viewpoint
Download Speed (Mbps)	47.12	34.30	88.54	16.07	17.80	70.54
Upload Speed (Mbps)	3.81	42.35	56.43	24.54	49.47	6.16
Latency	28.8	55.2	31.9	22.9	28.1	25.4

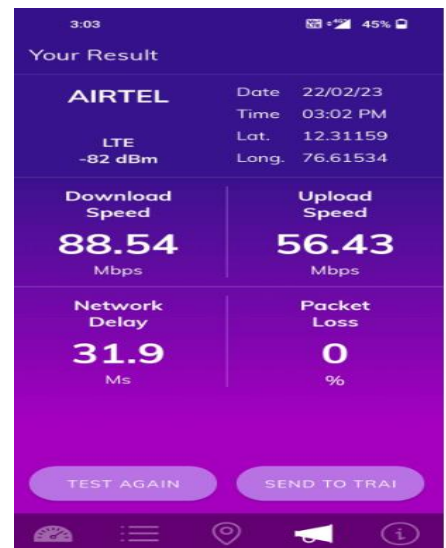
Mysuru Palace



Mysuru Railway Station



JSS University



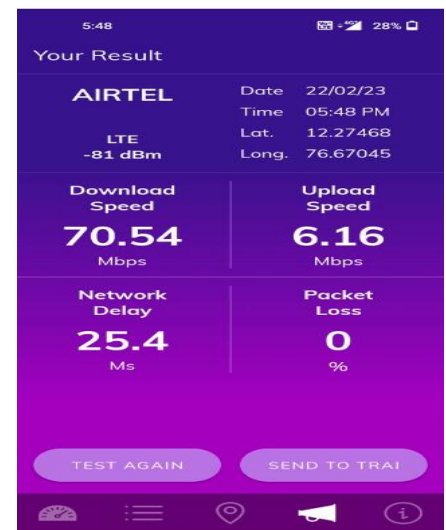
Mysuru Bus Station



Suyog Hospital



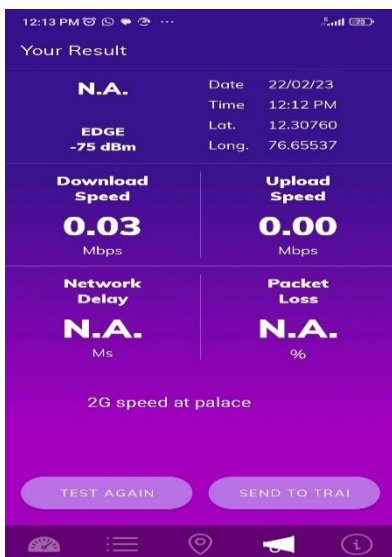
Chamundi Hills Viewpoint



V. TRAI MySpeed App Test Details-2G

Techology-2G	Mysuru Palace	Mysuru Railway Station	JSS University	Mysuru Bus Station	Suyog Hospital	Chamundi Hills Viewpoint
Download Speed (Kbps)	0.03	0.07	0.05	0.10	0.05	0.10
Upload Speed (kbps)	0.00	0.08	0.00	0.08	0.03	0.03
Latency(ms)	567.6	518.8	613.6	776.4	546.8	723

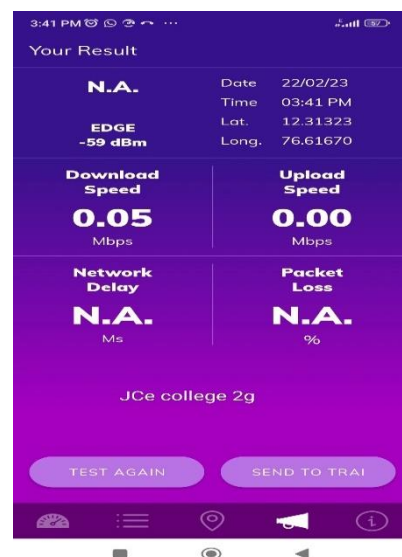
Mysuru Palace



Mysuru Railway Station



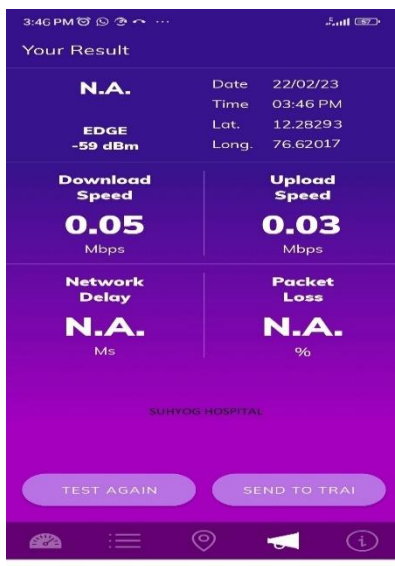
JSS University



Mysuru Bus Station



Suyog Hospital



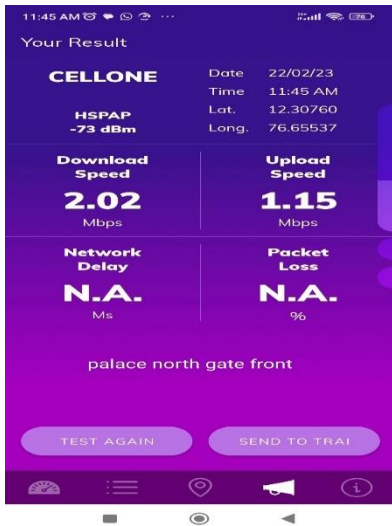
Chamundi Hills Viewpoint



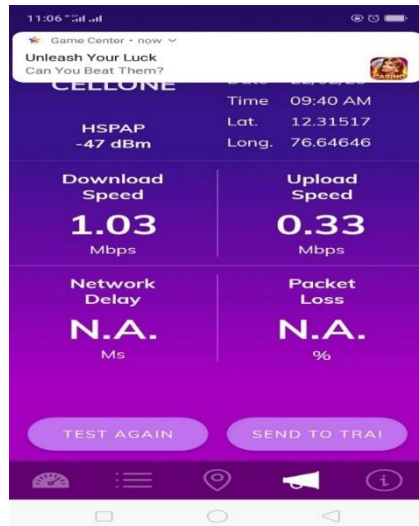
V. TRAI MySpeed App Test Details-3G/4G

Techology-4G/VoLTE	Mysuru Palace	Mysuru Railway Station	JSS University	Mysuru Bus Station	Suyog Hospital	Chamundi Hills Viewpoint
Download Speed (Mbps)	2.02	1.03	2.42	3.22	2.52	1.80
Upload Speed (Mbps)	1.15	0.33	2.15	0.57	1.25	0.97
Latency(ms)	648.8	575.2	606.4	593.8	640.2	611.6

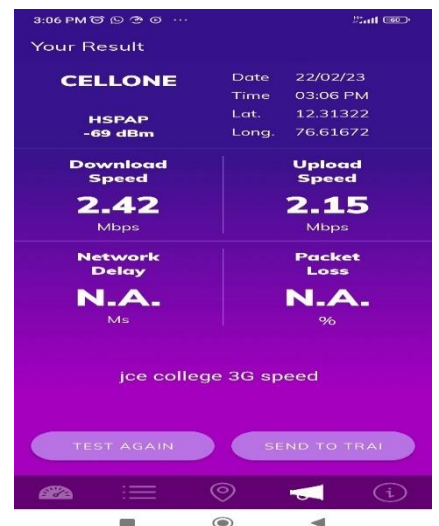
Mysuru Palace



Mysuru Railway Station



JSS University



Mysuru Bus Station



Suyog Hospital



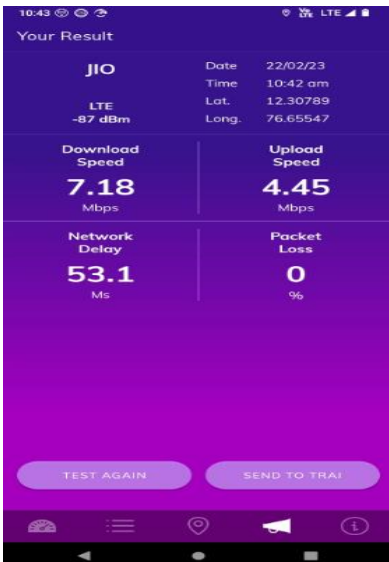
Chamundi Hills Viewpoint



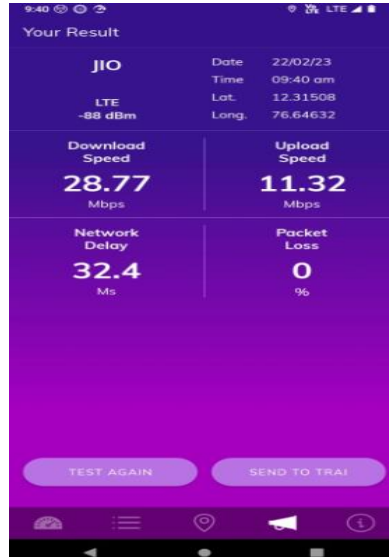
V. TRAI MySpeed App Test Details-4G

Techology-4G	Mysuru Palace	Mysuru Railway Station	JSS University	Mysuru Bus Station	Suyog Hospital	Chamundi Hills Viewpoint
Download Speed (Mbps)	7.18	28.77	33.16	25.97	13.98	34.56
Upload Speed (Mbps)	4.45	11.32	5.92	17.45	6.64	9.33
Latency	53.1	32.4	30.3	39.3	38.3	40.3

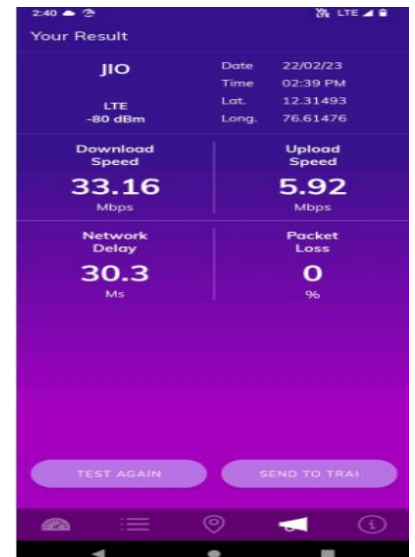
Mysuru Palace



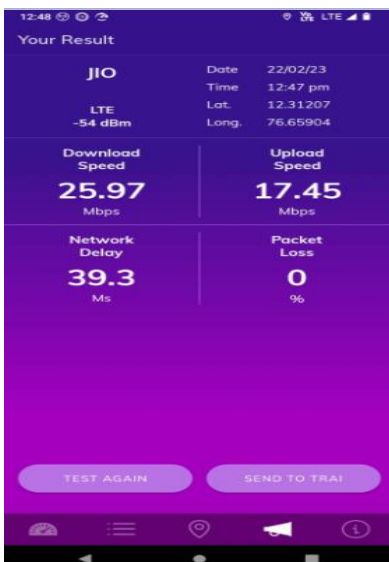
Mysuru Railway Station



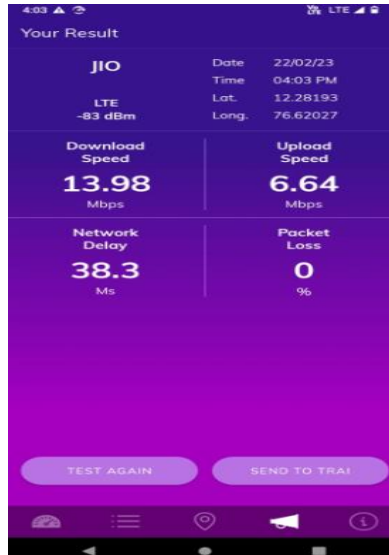
JSS University



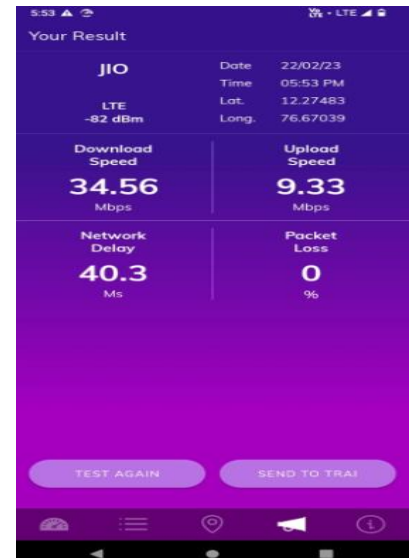
Mysuru Bus Station



Suyog Hospital

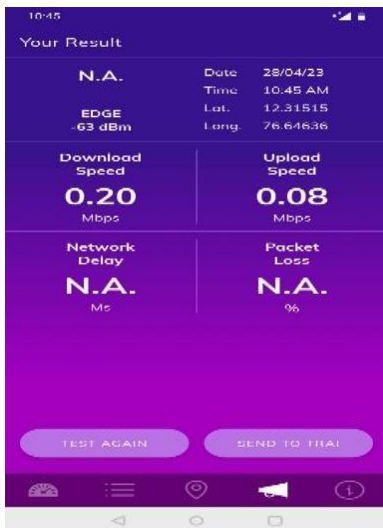


Chamundi Hills Viewpoint

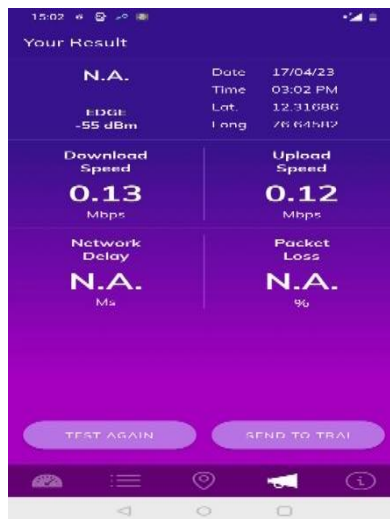


Technology-2G	Mysuru Palace	Mysuru Railway Station	JSS University	Mysuru Bus Station	Suyog Hospital	Chamundi Hills Viewpoint
Download Speed (Mbps)	0.2	0.13	0	0.03	0.23	0
Upload Speed (Mbps)	0.08	0.12	0.01	0.02	0.12	0.01
Latency	NA	NA	NA	NA	NA	NA

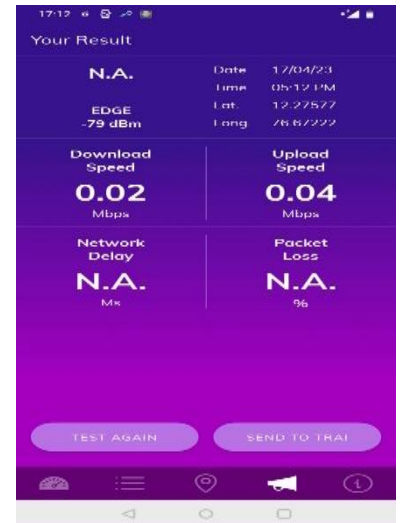
Mysuru Palace



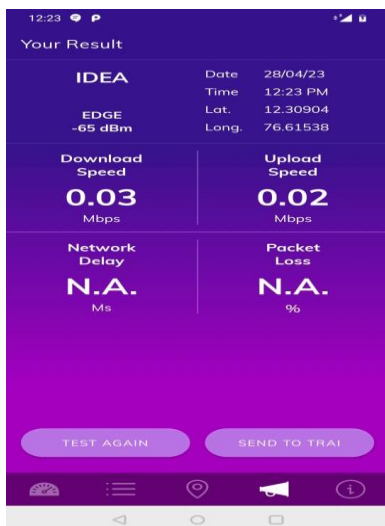
Mysuru Railway Station



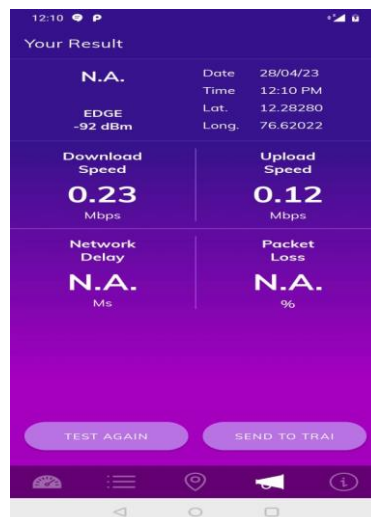
JSS University



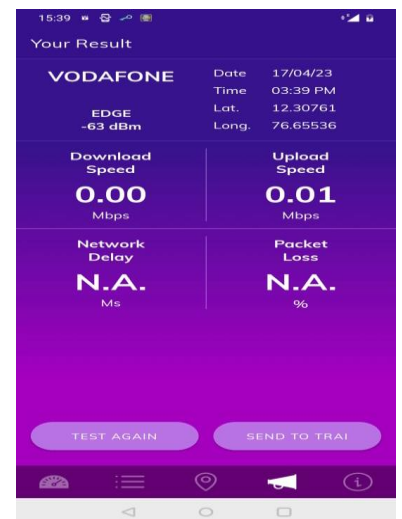
Mysuru Bus Station



Suyog Hospital



Chamundi Hills Viewpoint



Technology-4G/VoLTE	Mysuru Palace	Mysuru Railway Station	JSS University	Mysuru Bus Station	Suyog Hospital	Chamundi Hills Viewpoint
Download Speed (Mbps)	22.16	15.02	16.74	63.25	15.55	49.91
Upload Speed (Mbps)	3.83	12.87	2.33	6.64	5.07	10.21
Latency	NA	NA	NA	NA	NA	NA

Mysuru Palace



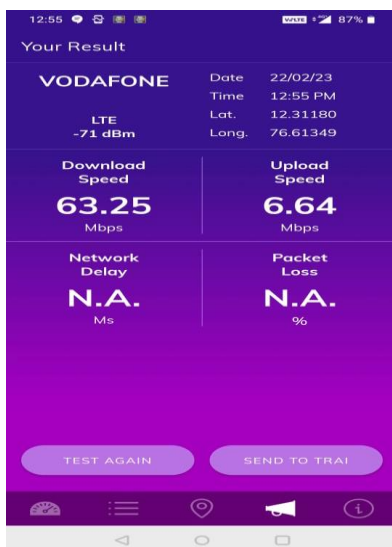
Mysuru Railway Station



JSS University



Mysuru Bus Station



Suyog Hospital



Chamundi Hills Viewpoint

