

**Information note to the Press**  
**(Press Release No. 70/2009/QoS)**  
**Telecom Regulatory Authority of India**

**For Immediate Release**

Tel. No. : 011-23230404  
Fax : 011-23213036  
E-mail : [advqos@traigov.in](mailto:advqos@traigov.in)  
Website : [www.traigov.in](http://www.traigov.in)

**TRAI Releases Network/POIs congestion report of the Cellular Mobile Service Providers (CMSPs) for the months of April, May & June 2009**

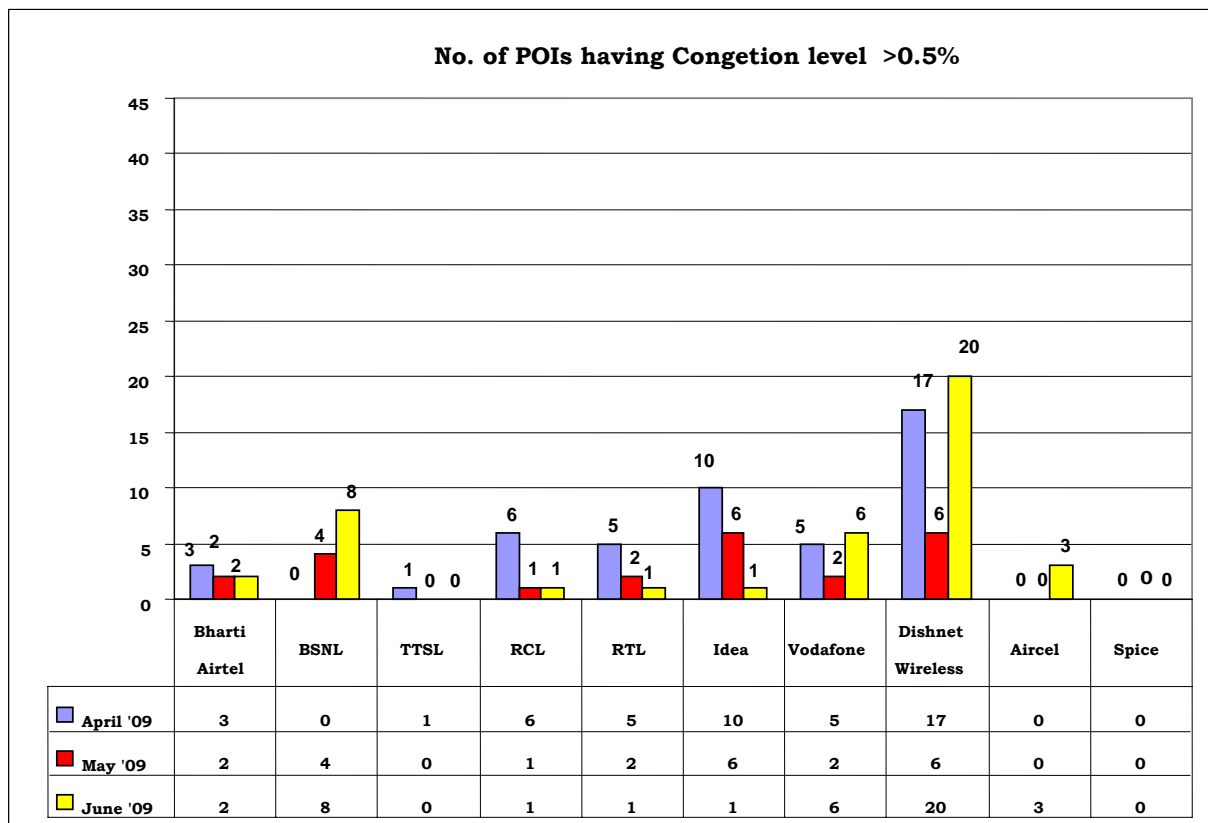
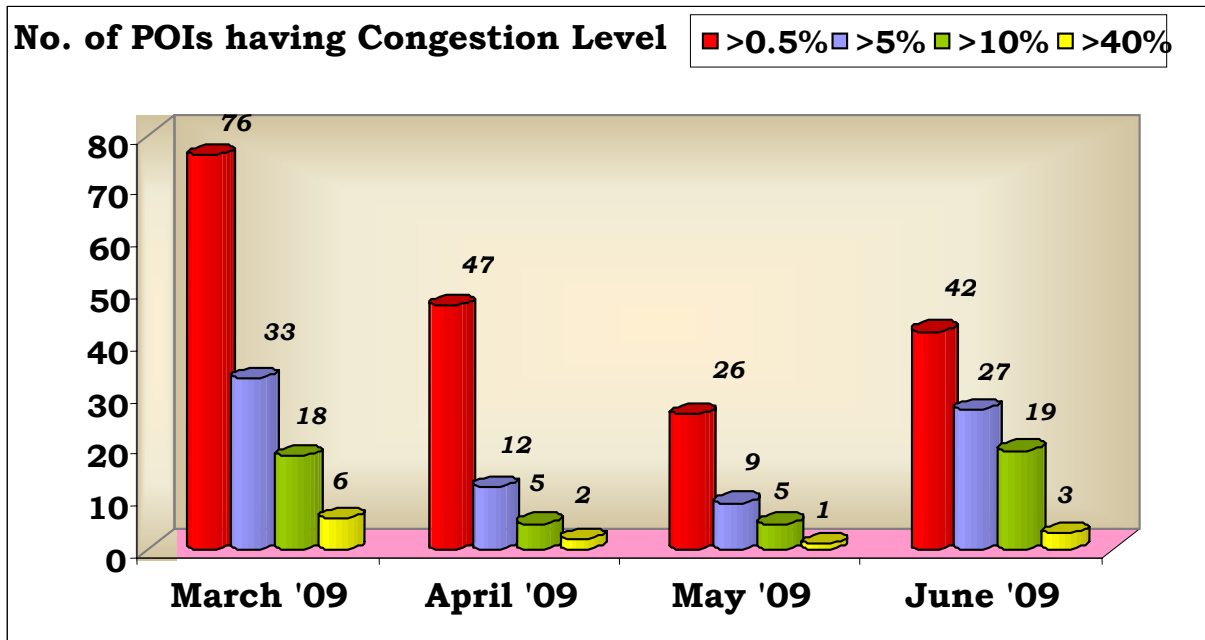
The growth of mobile network is taking place at a very rapid pace and about 11.6 million subscribers are added every month. In order to ensure seamless interconnection, TRAI has been monitoring the level of congestion at the Point of Interconnection (POI) between various service providers on a monthly basis. This parameter signifies the ease with which a customer of one network is able to communicate with a customer of another network. This parameter also reflects as to how effective is the interconnection between two networks. The benchmark notified by TRAI in the QoS Regulations for this parameter is <0.5%. This means out of 200 calls between two operators only one call should face congestion problem. The result of the monitoring reveals that in a number of areas, the degree of congestion between the operators is alarming. In a number of cities, the level of congestion between the networks of different operators is far more than this benchmark.

Cellular Mobile Service Providers have submitted their POIs Congestion Reports in TRAI for the months of April, May and June 2009.

- We have included only the Service Providers who do not meet the TRAI stipulated POI Congestion benchmark of <0.5% in any of their service areas.
- The POI Congestion Report analysis for the month of April, May and June 2009 shows that the performance of the CMSPs with respect to the congestion on POIs has improved in the month of June 2009 as compared with the performance in March 2009. During the period Cellular Mobile Telephone Subscriber base has increased from 391.76 million in March 2009 to 427.29 million in June 2009. The number of POIs having congestion has decreased from 76 in March 2009 to 42 in June 2009 .
- Out of these 42 POIs in June 2009, in 27 POIs, the level of congestion is more than 5% as compared to 33 POIs in March 2009.
- The number of worst affected POIs where the level of congestion is more than 10% is 22 in June 2009, whereas it was 24 in the month of March 2009. Out of these 22 POIs, in 3 POIs the level of congestion is more than 40% whereas it was 6 in the month of March 2009.
- In respect of POIs from Private CMSPs to BSNL/MTNL, the number of POIs having congestion has decreased from 27 in March 2009 to 14 in the month of June 2009.

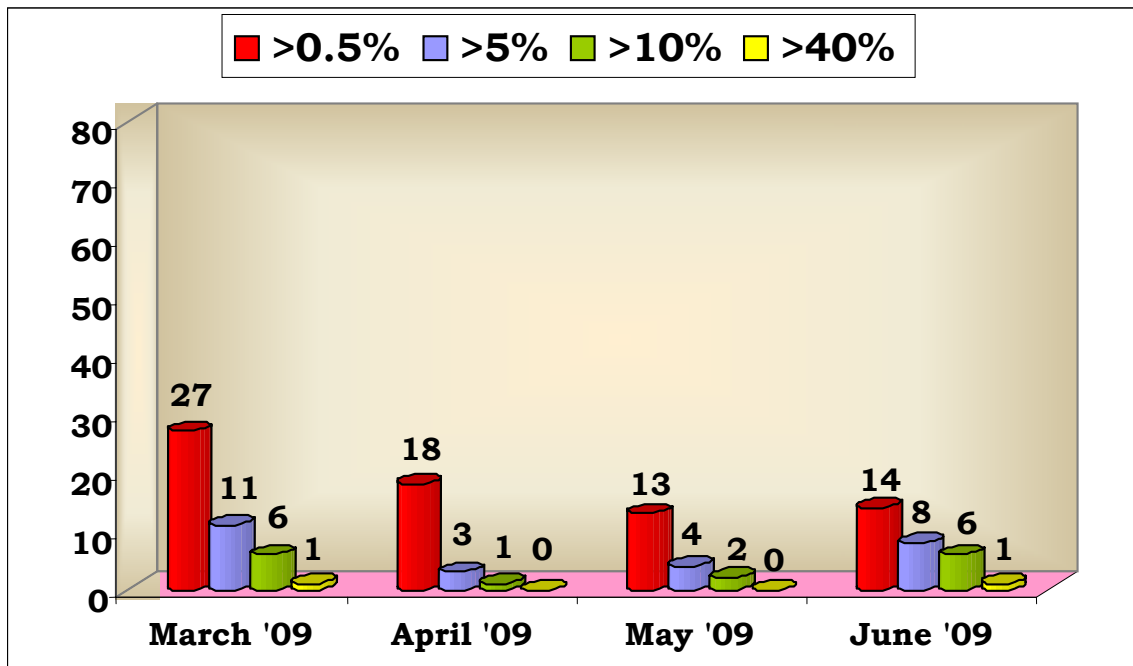
- During the same period, the number of POIs having congestion among the Private CMSPs has decreased from 49 in March 2009 to 28 in June 2009.
- Amongst the service providers as of June 2009, Dishnet Wireless have congestion in (20 POIs) followed by BSNL (8 POIs) and Vodafone (6 POIs).
- The Circles/ States more affected due to POI congestion are Bihar (9 no. of congested PoIs) followed by UP-East (7 PoIs), and Orissa (6 PoIs) .

**The analysis of the degree of congestion in these POIs is given below:-**

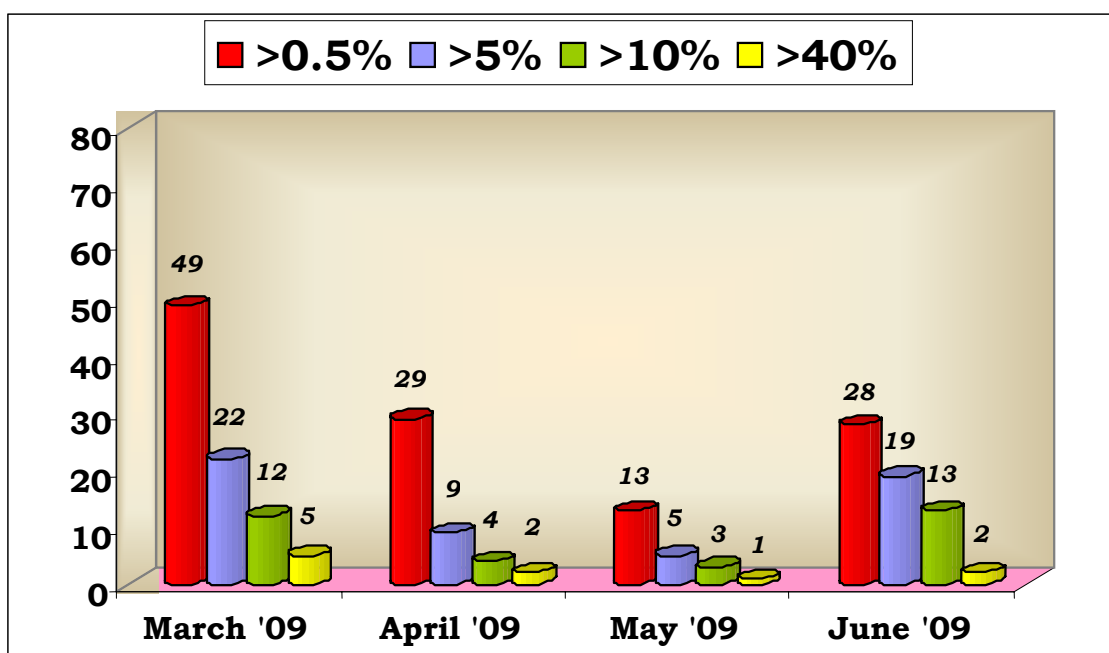


The POI congestion level between Private Service Providers and BSNL, and also among the Private Service Providers is given below in graphs: -

**Number of POIs having congestion level between Private Service Providers and BSNL/MTNL**



**Number of POIs having congestion level among the Private Service Providers**



### Critical Analysis – Operator wise: -

The worst affected POIs where Congestion level on point of interconnections (POIs) is more than 10%, from Private Service Providers to BSNL and Private Service Providers to Private Service Providers for the month of June 2009 :-

POIs between Private Operators and BSNL/MTNL						
Bharti Airtel	Tata Teleservices	Reliance Com/ Reliance Telecom	Idea Cellular	Vodafone	Dishnet Wireless	BSNL
-	-	-	-	<b>J&amp;K :-</b> <b>Level-1</b> Jammu = 12.3%	<b>Orissa :-</b> <b>Level - 2</b> Balasore = 46.67% Phulbani = 33.74% <b>J&amp;K :-</b> Cellone Srinagar = 18.86% <b>Bihar :-</b> Cellone Patna = 11.04% <b>Level-1</b> Raj Nagar NLD = 14.29%	With Pvt. Opt. <b>MH :-</b> BPL Cellular = 45.43% Hutch = 24.44% <b>J&amp;K :-</b> Reliance = 26.77% <b>UP-E :-</b> Airtel = 52.43% <b>Tamilnadu :-</b> Bombay 2 FTN (MTNL) = 10.79% <b>Rajasthan :-</b> Shyam UASL = 19.09% <b>MP :-</b> Vodafone = 18.65%

POIs among the Private Operators						
Bharti Airtel	Tata Teleservices	Reliance Com/ Reliance Telecom	Idea Cellular	Vodafone	Dishnet Wireless	Aircel
<b>Kolkata :-</b> Sistema = 19.94%	-	-	-	<b>UP-E :-</b> Vodafone NLD = 13.56% Spice NLD = 27.56%	<b>NE :-</b> Airtel = 37% <b>UP-E :-</b> Airtel = 26.99%	<b>Tamilnadu :-</b> Airtel Salem = 13.55%

The non-provisioning and insufficient provisioning of telecom circuit resource as per traffic requirements leads to:

- inter-network congestion at the Point of Interconnection (POI)
- loss of calls
- repeated call attempts by consumers
- deterioration in Quality of Service (QoS)
- consumer dissatisfaction

The network congestion report of all CMSPs for the period April, May and June 2009 is placed at TRAI website – [www.traigov.in](http://www.traigov.in)

---

Contact Address in case any clarification required:

Advisor (QoS), TRAI  
Mahanagar Doorsanchar Bhawan,  
Jawahar Lal Nehru Marg (Old Minto Road),  
New Delhi - 110002.  
Telephone – 011 - 23230404

Authorised for issue

Advisor (QoS)

**Comparative POI Congestion level of Cellular Mobile Service Providers**

Operators	March, 2009				April, 2009				May, 2009				June, 2009			
	>0.5%	>5%	>10%	>40%	>0.5%	>5%	>10%	>40%	>0.5%	>5%	>10%	>40%	>0.5%	>5%	>10%	>40%
<b>Bharti Airtel</b>	3	2	0	0	3	1	0	0	2	1	0	0	2	1	1	0
<b>BSNL</b>	0	0	0	0	NR	NR	NR	NR	4	3	1	1	8	8	7	2
<b>Tata Teleservices</b>	1	1	0	0	1	1	1	1	0	0	0	0	0	0	0	0
<b>RCL</b>	16	7	5	0	6	2	1	0	4	1	1	0	1	0	0	0
<b>RTL</b>	18	13	8	4	5	1	0	0	2	1	0	0	1	1	0	0
<b>Idea</b>	18	3	1	1	10	0	0	0	6	0	0	0	1	0	0	0
<b>Vodafone</b>	11	6	3	1	5	1	0	0	2	1	1	0	6	3	3	0
<b>Dishnet Wireless</b>	6	1	1	0	17	6	3	1	6	2	2	0	20	11	7	1
<b>Aircel Ltd.</b>	0	0	0	0	0	0	0	0	0	0	0	0	3	3	1	0
<b>Spice</b>	3	0	0	0	0	0	0	0	0	0	0	0	0	0	0	0
<b>Total</b>	<b>76</b>	<b>33</b>	<b>18</b>	<b>6</b>	<b>47</b>	<b>12</b>	<b>5</b>	<b>2</b>	<b>26</b>	<b>9</b>	<b>5</b>	<b>1</b>	<b>42</b>	<b>27</b>	<b>19</b>	<b>3</b>

**Analysis - No. of POIs having congestion level License Service Area wise**

SL. No.	Circles	March, 2009				April, 2009				May, 2009				June, 2009			
		>0.5%	>5%	>10%	>40%	>0.5%	>5%	>10%	>40%	>0.5%	>5%	>10%	>40%	>0.5%	>5%	>10%	>40%
1	Andhra Pradesh	8	4	1	0	3	2	2	2	1	1	1	0	0	0	0	0
2	Assam	7	4	1	0	2	0	0	0	1	0	0	0	0	0	0	0
3	Bihar	13	3	0	0	10	2	0	0	7	2	0	0	9	5	2	0
4	Chennai	0	0	0	0												
5	Delhi	1	1	1	1	2	0	0	0	0	0	0	0	0	0	0	0
6	Gujarat	3	2	1	0	1	0	0	0	0	0	0	0	0	0	0	0
7	Haryana	3	3	2	0	1	1	0	0	0	0	0	0	0	0	0	0
8	Himachal Pradesh	7	3	3	0	2	0	0	0	2	1	1	0	1	0	0	0
9	J & K	0	0	0	0	1	0	0	0	2	1	1	0	4	4	3	0
10	Karnataka	4	0	0	0	3	2	2	0	2	1	1	0	0	0	0	0
11	Kerala	3	1	0	0	3	0	0	0	1	0	0	0	0	0	0	0
12	Kolkata	8	6	6	4	2	0	0	0	0	0	0	0	1	1	1	0
13	Madhya Pradesh	0	0	0	0	0	0	0	0	1	0	0	0	1	1	1	0
14	Maharashtra	2	0	0	0	1	0	0	0	5	3	1	1	4	3	2	1
15	Mumbai	6	0	0	0	4	1	0	0	0	0	0	0	2	1	0	0
16	North East	2	1	1	0	4	0	0	0	1	0	0	0	2	1	1	0
17	Orissa	0	0	0	0	2	0	0	0	1	0	0	0	6	2	2	1
18	Punjab	2	1	0	0	1	1	0	0	0	0	0	0	0	0	0	0
19	Rajasthan	1	0	0	0	1	0	0	0	0	0	0	0	1	1	1	0
20	Tamilnadu	0	0	0	0	0	0	0	0	1	0	0	0	4	4	2	0
21	UP - East	1	0	0	0	2	1	0	0	1	0	0	0	7	4	4	1
22	UP - West	3	2	1	1	1	1	0	0	0	0	0	0	0	0	0	0
23	West Bengal	2	2	1	0	1	1	1	0	0	0	0	0	0	0	0	0
<b>Total</b>		<b>76</b>	<b>33</b>	<b>18</b>	<b>6</b>	<b>47</b>	<b>12</b>	<b>5</b>	<b>2</b>	<b>26</b>	<b>9</b>	<b>5</b>	<b>1</b>	<b>42</b>	<b>27</b>	<b>19</b>	<b>3</b>

POIs Congestion Report of M/s Bharti Airtel Limited for the months of April, May & June 2009				
Name of Circle and POIs	Benchmark <0.5%			Remarks
	April ,2009	May,2009	June,2009	
<b>Bihar</b>				
Cellone	8.50%	8.68%	2.48%	63 E1s has been commissioned on 22nd June'09, now the congestion is within limit (<0.5%)
<b>Kolkata</b>				
<b>POI with Private Operators</b>				
Sistema Kolkata	0.00%	0.00%	19.94%	Sistema had launched the services with 1 E1 for OG and 2E1s for incoming. Traffic volume was much above the deployed capacity currently. Augmentation is in progress.
<b>North East</b>				
Cellone	3.00%	0.80%	0.00%	
<b>Kerala</b>				
<b>POI with Private Operators</b>				
Aircel	1.87%	0.00%	0.00%	

POIs Congestion Report of M/s Tata Teleservices for the months of April, May & June 2009				
Name of Circle and POIs	Benchmark <0.5%			Remarks
	April ,2009	May,2009	June,2009	
<b>Andhra Pradesh</b>				
<b>POI with Private Operators</b>				
Aircel	58.10%	0.00%	0.00%	

POIs congestion Report of M/s Reliance Communications Ltd. for the months of April, May & June, 2009				
Name of Circle and POIs	Benchmark <0.5%			Action taken report
	April ,2009	May,2009	June,2009	
<b>Madhya Pradesh</b>				
<b>POI with Private Operators</b>				
Bharti	0.00%	1.61%	0.00%	
<b>Bihar</b>				
<b>POI with BSNL Level 2 TAX</b>				
Saharsa	1.60%	0.00%	0.00%	
<b>POI with Private Operators</b>				
Airtel	2.60%	2.30%	2.10%	42 E1 demanded from Airtel. Port confirmation awaited from Airtel.
<b>Karnataka</b>				
<b>POI with BSNL Level 2 TAX - Basic POIs</b>				
BSNL Tax	4.78%	0.00%	0.00%	
<b>UP - East</b>				
<b>POI with Private Operators</b>				
Bharti	0.00%	1.70%	0.00%	
<b>West Bengal</b>				
<b>POI with Private Operators</b>				
RTL	11.52%	0.00%	0.00%	
<b>Haryana</b>				
<b>POI with Private Operators</b>				
RTL	6.72%	0.00%	0.00%	
<b>Himachal Pradesh</b>				
<b>POI with BSNL Level 2 TAX - Basic POIs</b>				
Hamirpur	0.00%	20.00%	0.00%	
<b>Delhi</b>				
<b>POI with Private Operators</b>				
Tata	1.70%	0.00%	0.00%	



POIs Congestion Report of M/s Reliance Telecom Ltd. for the months of April, May & June,2009				
Name of Circle and POIs	Benchmark <0.5%			Remarks
	April ,2009	May,2009	June,2009	
<b>Bihar</b>				
<b>POI with BSNL Level 2 TAX</b>				
Saharsa	9.17%	7.01%	7.19%	Augmentation of Poi is approved but as per the instructions of SSA, Poi built up has to be shifted from Microwave building to TAX building BSNL order for the same is awaited.
<b>POI with Private Operators</b>				
Airtel Local with Patna	2.67%	0.00%	0.00%	
<b>Assam</b>				
Cellone	0.00%	1.30%	0.00%	
<b>POI with BSNL Level 2 TAX</b>				
Silchar	0.80%	0.00%	0.00%	
<b>Kolkata</b>				
<b>POI with Private Operators</b>				
Airtel Kolkata	0.80%	0.00%	0.00%	
<b>North East</b>				
Cellone Shilong	2.73%	0.00%	0.00%	

POI Congestion Report of M/s Idea Cellular Ltd. for the months of April, May & June, 2009					
Name of Circle and POIs	Benchmark <0.5%			Remarks	
	April ,2009	May,2009	June,2009		
<b>Bihar</b>					
<b>POI with Private Operators</b>					
Aircel Patna Bothway	4.70%	0.00%	0.00%	10 E1s augmentation is under process. The augmentation is pending from Reliance end.	
Airtel Ranchi OG	4.20%	3.70%	0.00%		
Airtel Muz. OG	3.10%	0.00%	0.00%		
Airtel BGP	0.00%	1.30%	0.00%		
Tata Jamshedpur	0.00%	2.10%	0.00%		
RIM Patna Bothway	2.40%	2.10%	0.00%		
RIM NLD Bothway	0.00%	0.00%	4.80%		
RIM ILD Bothway	3.10%	0.00%	0.00%		
<b>Andhra Pradesh</b>					
<b>POI with Private Operators</b>					
Aircel	0.68%	0.00%	0.00%		
<b>Maharashtra</b>					
<b>POI with BSNL Level 2 TAX</b>					
Gadchiroli	0.00%	1.94%	0.00%		
<b>Mumbai</b>					
<b>POI with MTNL</b>					
MTNL Dolphin Wireless	0.60%	0.00%	0.00%		
<b>POI with Private Operators</b>					
Delhi NLD	0.90%	0.00%	0.00%		
Pune GMSC	0.60%				
<b>Kerala</b>					
<b>POI with Private Operators</b>					
Vodafone CMSF MSC1	0.99%	0.83%	0.00%		

POI Congestion Report of M/s Vodafone Essar Mobile Services Ltd. for the months of April, May & June 2009				
Name of Circle and POIs	Benchmark <0.5%			Remarks
	April, 2009	May, 2009	June, 2009	
<b>Gujarat</b>				
<b>POI with Private Operators</b>				
Reliance JAL	5.58%	0.00%	0.00%	
<b>Gujarat</b>				
<b>POI with Private Operators</b>				
RIM Mobile	3.39%	0.00%	0.00%	
<b>Rajasthan</b>				
<b>POI with Private Operators</b>				
Idea 3	2.21%	0.00%	0.00%	
<b>UP- East</b>				
<b>POI with Private Operators</b>				
Reliance	0.00%	0.00%	1.56%	
Vodafone NLD	0.00%	0.00%	13.56%	39 E1 augmented with Vodafone NGN NLD
Vodafone UP-W	0.00%	0.00%	4.11%	
Spice NLD	0.00%	0.00%	27.56%	4 E1 augmented with Spice NLD
<b>Maharashtra</b>				
Cellone	2.19%	2.15%	2.73%	No Comments
<b>Assam</b>				
<b>POI with Private Operators</b>				
Aircel MSC1	1.20%	0.00%	0.00%	
<b>J &amp; K</b>				
<b>POI with BSNL Level 1 TAX</b>				
Jammu	0.00%	11.10%	12.30%	50 E1 applied & feasibility awaited from BSNL end

POI Congestion Report of M/s Aircel Ltd. for the months of April, May & June, 2009				
Name of Circle and POIs	Benchmark <0.5%			Remarks
	April, 2009	May, 2009	June, 2009	
<b>Tamilnadu</b>				
<b>POI with Pri vate Operators</b>				
Airtel Salem	0.00%	0.00%	13.55%	Overflow is given thru Coimbatore POI
Airtel Madurai	0.00%	0.00%	8.04%	1 STM1 augmentation is in progress. Overflow is given thru Coimbatore POI
Airtel Trichy	0.00%	0.00%	8.82%	

POI Congestion Report of M/s BSNL for the months of April, May & June, 2009				
Name of Circle and POIs	Benchmark <0.5%			Remarks
	April, 2009	May, 2009	June, 2009	
<b>Maharashtra</b>				
<b>POI with MTNL</b>				
Goregaon Dolphin	NR	9.51%	0.00%	
<b>POI with Pri vate Operators</b>				
BPL Vodafone	NR	59.28%	0.00%	
BPL Vodafone	NR	7.39%	0.00%	
BPL Cellular	NR	0.00%	45.43%	
Hutch CMTS	NR	0.00%	24.44%	No Comments
BPL CVodafone1	NR	0.00%	5.78%	
<b>J &amp; K</b>				
<b>POI with Pri vate Operators</b>				
Reliance	NR	0.00%	26.77%	No Comments
<b>UP-E</b>				
<b>POI with Pri vate Operators</b>				
Bharti	NR	0.00%	52.43%	No Comments
<b>Tamilnadu</b>				
<b>POI with MTNL</b>				
Bombay 2 FTN	NR	3.75%	10.79%	No Comments
<b>Rajasthan</b>				
<b>POI with Pri vate Operators</b>				
Shyam UASL	NR	0.00%	19.09%	No Comments
<b>Madhya Pradesh</b>				
<b>POI with Pri vate Operators</b>				
Vodafone Cellular	NR	0.00%	18.65%	No Comments

POI Congestion Report of M/s Dishnet Wireless Ltd. for the month of April, May & June 2009				
Name of Circle and POIs	Benchmark <0.5%			Remarks
	April, 2009	May, 2009	June, 2009	
<b>Andhra Pradesh</b>				
<b>POI with Private Operators</b>				
Airtel Local	0.00%	13.53%	0.00%	
<b>Mumbai</b>				
<b>POI with Private Operators</b>				
Airtel	5.46%	0.00%	7.03%	Augmentation in progress
Airtel Malad	0.00%	0.00%	1.25%	
<b>Andhra Pradesh</b>				
<b>POI with Private Operators</b>				
Idea	43.27%	0.00%	0.00%	
<b>Kerala</b>				
<b>POI with Private Operators</b>				
Idea	3.05%	0.00%	0.00%	
<b>Karnataka</b>				
<b>POI with BSNL Level 2 TAX</b>				
BSNL NLD	18.07%	2.12%	0.00%	
<b>POI with Private Operators</b>				
Idea	0.00%	14.72%	0.00%	
Bharti	34.45%	0.00%	0.00%	
<b>North East</b>				
<b>POI with BSNL Level 1 TAX</b>				
Shillong MSC1 Local	1.70%	0.00%	0.00%	
Shillong NLD	2.70%	0.00%	0.00%	
<b>POI with Private Operators</b>				
Airtel MSC2	0.00%	0.00%	37.00%	AT for 1E completed. CDR comparison under process
Airtel Local	0.00%	0.00%	0.58%	Augmentation under progress
<b>Orissa</b>				
<b>POI with BSNL Level 1 TAX</b>				
Bhubaneswar MSC1 Local	2.74%	0.00%	0.00%	
Bhubaneswar MSC1 NLD	0.56%	0.00%	0.00%	
Cuttack	0.00%	0.00%	0.67%	Signalling fluctuation
<b>POI with BSNL Level 2 TAX</b>				
Balasore	0.00%	0.00%	46.67%	Own OFC media outage, restored now
Angul	0.00%	0.00%	0.67%	BSNL media fluctuation
Phulbani	0.00%	4.00%	33.74%	BSNL media outage, restored now
Sambalpur	0.00%	0.00%	3.33%	Sambalpur OFC media outage, restored now
<b>POI with Private Operators</b>				
Idea Local	0.00%	0.00%	3.58%	E1 Augmentation
<b>Delhi</b>				
<b>POI with Private Operators</b>				
Tata	4.28%	0.00%	0.00%	
<b>UP- East</b>				
<b>POI with Private Operators</b>				
BTSOL ILD	1.00%	0.00%	0.00%	
Aircel NLD	5.50%	0.00%	0.00%	
Airtel	0.00%	0.00%	26.99%	5 E1's request and will be added in next 2 days
Reliance	0.00%	0.00%	2.11%	10 E1's augmentation agreed and will be added by this week end.
<b>UP- West</b>				
<b>POI with Private Operators</b>				
Aircel NLD	6.26%	0.00%	0.00%	
<b>J &amp; K</b>				
Cellone Jammu	0.00%	0.00%	7.66%	38 E1 A/T offered
Cellone Srinagar	0.00%	0.00%	18.86%	43 E1 feasibility awaited
<b>POI with BSNL Level 1 TAX</b>				
Jammu Local	1.26%	0.51%	0.00%	
<b>Bihar</b>				
<b>Cellone Patna</b>				
Cellone Patna	0.00%	0.00%	11.04%	63 E1 STM connectivity switch A/T is in progress
<b>POI with BSNL Level 1 TAX</b>				
Raj Nagar NLD	0.00%	0.00%	14.29%	Overflow traffic towards L1 BSNL Budha Marg
<b>POI with Private Operators</b>				
Airtel	0.00%	0.00%	7.00%	Requested already made to Airtel for augmentation
Aircel NLD	0.00%	0.00%	5.07%	Augmentation of E1 is in progress
RIM	0.00%	0.00%	0.76%	
<b>Himachal Pradesh</b>				
<b>Cellone Shimla</b>				
Cellone Shimla	0.00%	1.84%	4.52%	Demand note received for 5 E1 and payment under process
<b>POI with BSNL Level 2 TAX</b>				
Shimla MSC1 Local	1.77%	0.00%	0.00%	
Shimla MSC1 NLD	1.08%	0.00%	0.00%	
<b>Kolkata</b>				
<b>POI with BSNL Level 1 TAX</b>				
Kolkata MSC-1 Local	0.82%	0.00%	0.00%	