

**Information note to the Press**  
**(Press Release No.02/2009/QoS)**  
**Telecom Regulatory Authority of India**

**For Immediate Release**

Tel. No. : 011-23230404  
Fax : 011-23213036  
E-mail : [advqos@traigov.in](mailto:advqos@traigov.in)  
Website : [www.traigov.in](http://www.traigov.in)

**TRAI Releases Network/POIs congestion report of the Cellular Mobile Service Providers (CMSPs) for the months of July, August & September 2008**

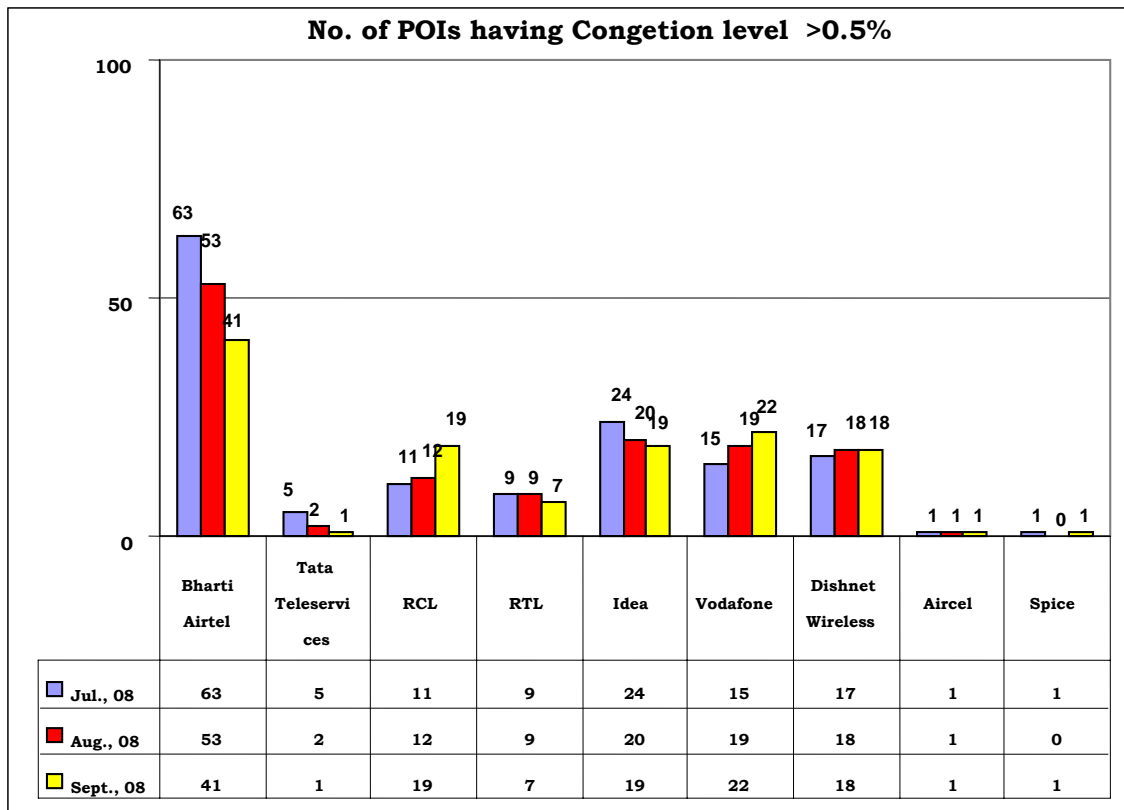
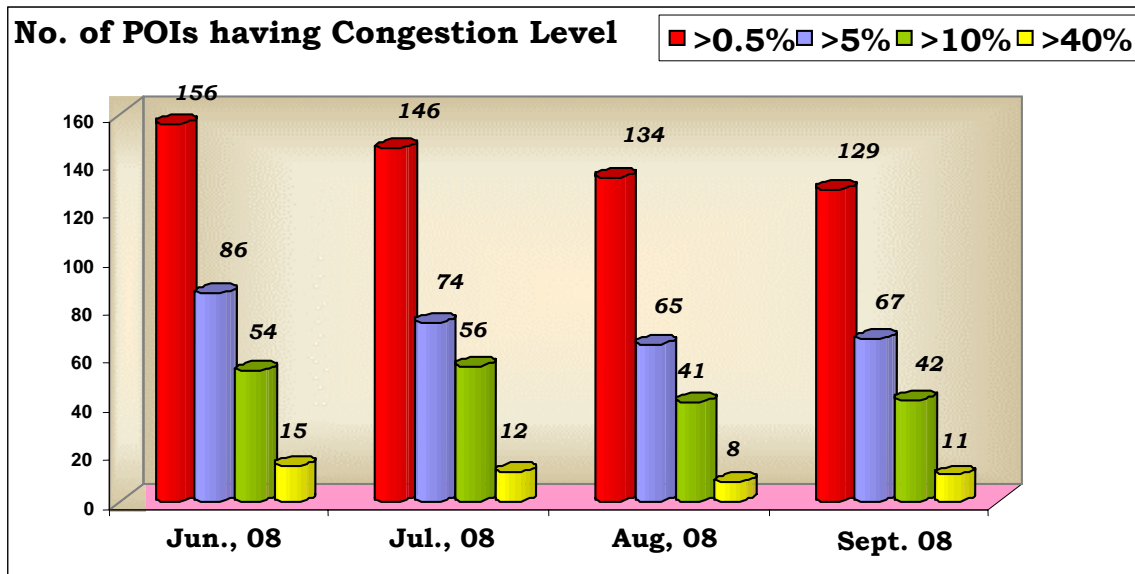
The growth of mobile network is taking place at a very rapid pace and about 9 million subscribers are added every month. In order to ensure seamless interconnection, TRAI has been monitoring the level of congestion at the Point of Interconnection (POI) between various service providers on a monthly basis. This parameter signifies the ease with which a customer of one network is able to communicate with a customer of another network. This parameter also reflects as to how effective is the interconnection between two networks. The benchmark notified by TRAI in the QoS Regulation of July 2005 for this parameter is <0.5%. This means out of 200 calls between two operators only one call should face congestion problem. The result of the monitoring reveals that in a number of areas, the degree of congestion between the operators is alarming. In a number of cities, the level of congestion between the networks of different operators is far more than this benchmark.

Cellular Mobile Service Providers have submitted their POIs Congestion Reports in TRAI for the month of July, August and September 2008.

- We have included only the Service Providers who do not meet the TRAI stipulated POI Congestion benchmark of <0.5% in any of their service areas.
- The POI Congestion Report analysis for the month of July, 2008 to September, 2008 shows that the performance of the CMSPs with respect to the congestion on POIs has improved in the month of September, 2008 as compared with the performance in June, 2008. During the period Cellular Mobile Telephone Subscriber base has increased from 286.87 million in June 2008 to 315.31 million in September 2008. The number of POIs having congestion has decreased from 156 in June, 2008 to 129 in September, 2008.
- Out of these 129 POIs in September, 2008, in 67 POIs, the level of congestion is more than 5% as compared to 86 POIs in June, 2008.
- The number of such POIs where the level of congestion is more than 10% is 42 in September, 2008, whereas it was 54 in the month of June, 2008.
- The number of worst affected POIs where congestion level is more than 40% is 11 in the month of September, 2008 whereas it was 15 in the month of June, 2008.
- In respect of POIs from Private CMSPs to BSNL/MTNL, the number of POIs having congestion has decreased from 94 in June, 2008 to 68 in the month of September, 2008.

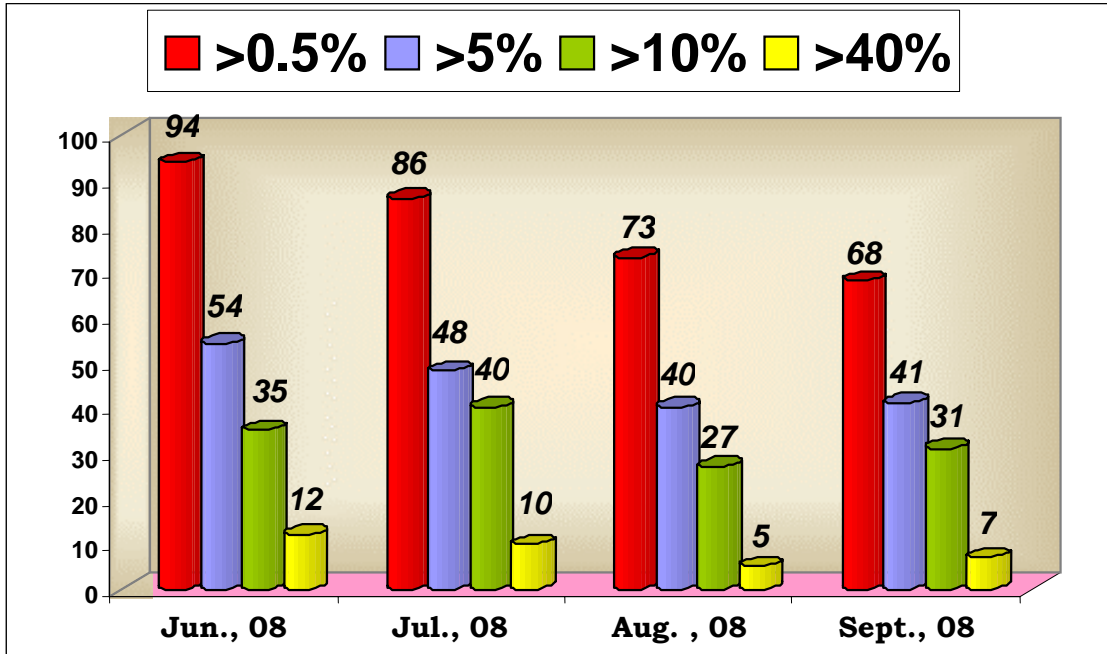
- During the same period POI congestion among Private CMSPs has also decreased from 62 in June, 2008 to 61 in September, 2008.
- Amongst the private service providers, Bharti Airtel has the largest number of POIs having Congestion (41 POIs as of September '08) followed by Vodafone 22 POIs as of September '08), Reliance Communications and Idea (19 POIs each as of September '08), Dishnet Wireless (18 POIs).
- The Circles/ States more affected due to POI congestion are Bihar, Maharashtra, Gujarat, Mumbai, UP-W and Himachal Pradesh.

**The analysis of the degree of congestion in these POIs is given below:-**

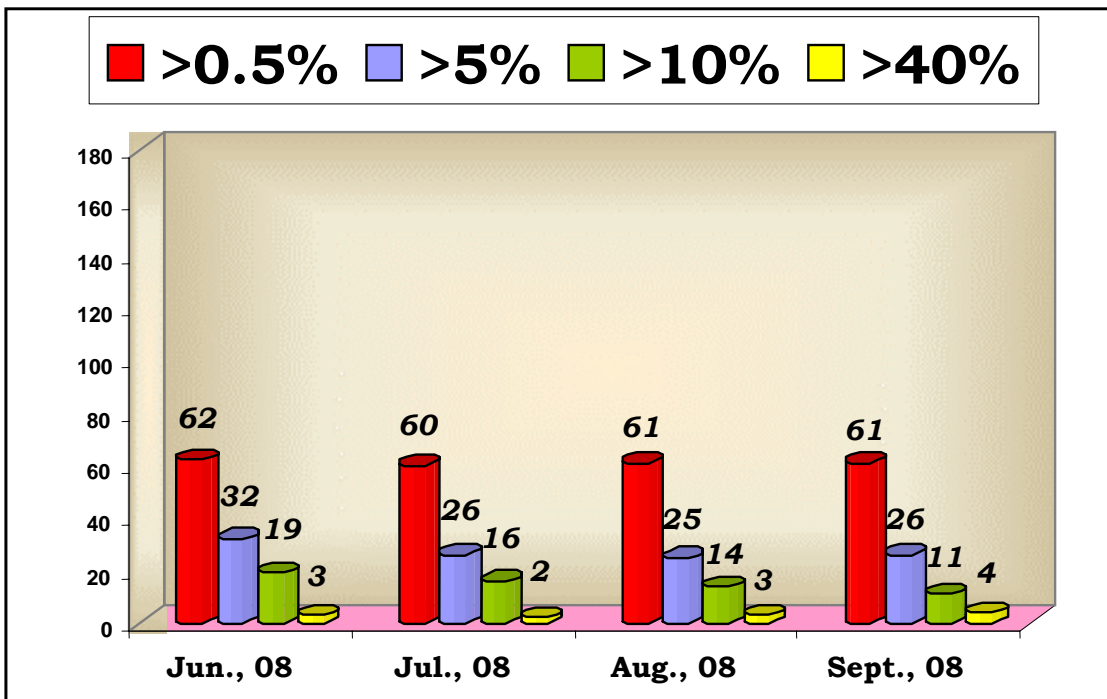


The POI congestion level between Private Service Providers and BSNL, and also among the Private Service Providers is given below in graphs: -

**Number of POIs having congestion level between Private Service Providers and BSNL/MTNL**



**Number of POIs having congestion level among the Private Service Providers**



### Critical Analysis – Operator wise: -

The worst affected POIs where Congestion level on point of interconnections (POIs) is more than 40%, from Private Service Providers to BSNL and Private Service Providers to Private Service Providers for the month of September, 2008 : -

<b>POIs between Private Operators and BSNL</b>					
<b>Bharti Airtel</b>	<b>Tata Teleservices</b>	<b>Reliance Com/ Reliance Telecom</b>	<b>Idea Cellular</b>	<b>Vodafone</b>	<b>Dishnet Wireless</b>
<b>UP-E :- Level -1</b> Indiranagar Axe Exch. = 58.00%	-	<b>Reliance Telecom</b>  <b>North East :- Cellone Shilong =</b> 69.18%	<b>UP-W :- Level -2</b> Kotdwar = 49.63% Almora = 48.25%  <b>Himachal Pradesh :- Cellone =</b> 67.85%  <b>Level -1</b> Shimla = 42.18%	<b>Haryana :- Cellone =</b> 52.96%	-

<b>POIs among the Private Operators</b>					
<b>Bharti Airtel</b>	<b>Tata Teleservices</b>	<b>Reliance Com/ Reliance Telecom</b>	<b>Idea Cellular</b>	<b>Vodafone</b>	<b>Dishnet Wireless</b>
<b>Rajasthan :- Reliance Comm.</b> = 77.88%	-	<b>Reliance Telecom</b>  <b>Bihar: - Airtel Local =</b> 58.50%	<b>UP-W :- Reliance =</b> 63.42%	<b>Haryana :- Reliance NLD =</b> 41.71%	-

The non-provisioning and insufficient provisioning of telecom circuit resource as per traffic requirements leads to:

- inter-network congestion at the Point of Interconnection (POI)
- loss of calls
- repeated call attempts by consumers
- deterioration in Quality of Service (QoS)
- consumer dissatisfaction.

The network congestion report of all CMSPs for the period July, August and September 2008 is placed at TRAI website – [www.trai.gov.in](http://www.trai.gov.in)

---

Contact Address in case any clarification required:

Advisor (QoS), TRAI  
Mahanagar Doorsanchar Bhawan,  
Jawahar Lal Nehru Marg (Old Minto Road),  
New Delhi - 110002.  
Telephone – 011 - 23230404

Authorised for issue

Advisor (QoS)

**Comparative POI Congestion level of Cellular Mobile Service Providers**

Operators	June, 2008				July, 2008				August, 2008				September, 2008			
	>0.5%	>5.0%	10.0%	40.0%	>0.5%	>5.0%	10.0%	40.0%	>0.5%	>5.0%	10.0%	40.0%	>0.5%	>5%	>10%	>40%
<b>Bharti Airtel</b>	56	28	20	2	63	31	24	1	53	23	15	3	41	20	11	2
<b>Tata Teleservices</b>	5	3	2	1	5	3	3	2	2	1	0	0	1	1	1	0
<b>RCL</b>	22	9	4	0	11	4	3	0	12	4	2	0	19	9	5	0
<b>RTL</b>	12	9	5	1	9	6	4	2	9	7	6	1	7	5	5	2
<b>Idea</b>	19	9	5	2	24	11	6	2	20	8	6	1	19	13	7	5
<b>Vodafone</b>	19	13	9	2	15	11	8	2	19	12	5	2	22	10	7	2
<b>Dishnet Wireless</b>	21	15	9	7	17	8	8	3	18	10	7	1	18	9	6	0
<b>Aircel Limited</b>	0	0	0	0	1	0	0	0	1	0	0	0	1	0	0	0
<b>Spice</b>	2	0	0	0	1	0	0	0	0	0	0	0	1	0	0	0
<b>Total</b>	<b>156</b>	<b>86</b>	<b>54</b>	<b>15</b>	<b>146</b>	<b>74</b>	<b>56</b>	<b>12</b>	<b>134</b>	<b>65</b>	<b>41</b>	<b>8</b>	<b>129</b>	<b>67</b>	<b>42</b>	<b>11</b>

**Analysis - No. of POIs having congestion level License Service Area wise**

SL. No.	Circles	June, 2008				July, 2008				August, 2008				September, 2008			
		>0.5%	>5%	>10%	>40%	>0.5%	>5%	>10%	>40%	>0.5%	>5%	>10%	>40%	>0.5%	>5%	>10%	>40%
1	Andhra Pradesh	5	3	2	0	7	2	2	0	5	3	2	0	2	2	2	0
2	Assam	6	5	2	0	5	3	3	0	6	3	2	0	5	1	1	0
3	Bihar	19	15	11	3	21	15	13	6	20	16	11	0	19	12	9	1
4	Chennai	1	0	0	0	1	0	0	0	1	0	0	0	2	1	0	0
5	Delhi	3	1	0	0	3	1	0	0	3	1	0	0	3	0	0	0
6	Gujarat	12	5	5	0	13	6	5	0	9	6	2	0	11	5	3	0
7	Haryana	12	8	4	2	10	5	5	2	6	4	3	2	7	6	4	2
8	Himachal Pradesh	10	7	5	3	7	3	2	1	7	3	3	1	9	4	3	2
9	J & K	5	4	3	0	5	4	4	0	3	2	2	0	3	1	1	0
10	Karnataka	4	0	0	0	1	0	0	0	0	0	0	0	3	2	1	0
11	Kerala	6	3	1	0	11	5	1	0	5	1	0	0	4	2	0	0
12	Kolkata	4	2	0	0	7	3	1	0	4	2	2	1	2	1	1	0
13	Madhya Pradesh	6	3	2	0	8	3	2	0	2	2	2	1	0	0	0	0
14	Maharashtra	16	8	5	0	5	3	2	0	11	2	0	0	13	7	1	0
15	Mumbai	6	0	0	0	9	3	3	0	15	2	2	0	10	0	0	0
16	North East	11	7	3	1	8	6	5	1	6	3	1	1	6	6	4	1
17	Orissa	3	1	0	0	0	0	0	0	2	1	1	0	0	0	0	0
18	Punjab	2	1	1	0	2	1	0	0	1	1	0	0	1	1	1	0
19	Rajasthan	4	3	2	1	10	6	4	1	12	8	4	1	5	4	3	1
20	Tamilnadu	3	2	2	1	1	1	1	0	1	1	1	1	4	2	0	0
21	UP - East	5	3	2	0	3	2	2	0	4	0	0	0	6	5	4	1
22	UP - West	4	1	1	1	3	1	1	1	8	4	3	0	10	5	4	3
23	West Bengal	9	4	3	3	6	1	0	0	3	0	0	0	4	0	0	0
<b>Total</b>		<b>156</b>	<b>86</b>	<b>54</b>	<b>15</b>	<b>146</b>	<b>74</b>	<b>56</b>	<b>12</b>	<b>134</b>	<b>65</b>	<b>41</b>	<b>8</b>	<b>129</b>	<b>67</b>	<b>42</b>	<b>11</b>

**POIs Congestion Report of M/s Bharti Airtel Limited for the month of July, August & September 2008**

Name of Circle and POIs	Benchmark <0.5%			Action taken by M/s Bharti Airtel Ltd
	July, 2008	August, 2008	September, 2008	
<b>Delhi</b>				
<b>POI With MTNL</b>				
Dolphin				
<b>Bihar</b>				
<b>Cellone</b>	7.73%	9.20%	14.52%	22 E1s augmented & A/T completed for additional 29 E1s
<b>POI With BSNL Level 1 TAX</b>				
Patna	1.00%	1.80%	0.92%	25 E1s augmented
<b>POI With BSNL Level 2 TAX</b>				
Aarah				
Dumka		7.40%	0.00%	
Aarah MSC-1				
Ranchi			2.45%	Applied for additional E1s
<b>POI with Private Operators</b>				
Dishnet Aircel	15.35%	19.70%	10.35%	50 E1s augmented
Reliance WLL/WLN	16.80%	14.40%	17.13%	30 E1s augmented. Feasibility awaited from Reliance for 126 E1s
Reliance Telecom	12.93%	16.90%	8.97%	10 E1s augmented. Feasibility awaited from Reliance for 126 E1s
TATA Mobile/Fix	0.90%	1.60%	1.05%	TTSL not ready for augmentation 15 E1s pending since last 6 mths
BSOL NLDO			0.87%	75E1s Augmented
<b>Gujarat</b>				
Cellone	37.80%	30.86%	38.06%	New 20 E1s applied from Rajkot(Shahibaug) Cellone MSC approval awaited from BSNL office. Transmission A/T completd BSNL is now allowing to connect 3rd MSC with Cellone MSC as such calls are not affected Overflow level 1 AXE TAX
Cellone	20.90%			
<b>POI with BSNL Level 1 TAX</b>				
Ahamedabad - Bhadra	2.50%	9.08%	0.00%	
GBT	12.40%			
Gulbai tekra	0.70%	8.93%	0.00%	
Gulbai tekra AXE	8.90%			
Gulbai tekra OCB	1.60%	10.70%	0.00%	
<b>POI with BSNL Level 2 TAX</b>				
Bhuj				
Baroda	1.10%	0.00%	0.00%	
Bhavnagar	5.00%	0.00%	0.00%	
Amreli				
Gulbai tekra _ahd				
GBT				
GBT OCB TAX POI				
<b>POI with Private Operators</b>				
Reliance				
Idea	0.53%	0.00%	0.00%	
Vodafone	1.10%	0.00%	0.00%	
<b>Haryana</b>				
Cellone, Ambala	11.00%	0.00%	0.00%	
<b>POI with BSNL Level 1Tax</b>				
Ambala City	1.20%	0.00%	0.00%	
<b>POI with BSNL Level 2Tax</b>				
Rewari				
<b>POI with Private Operators</b>				
Reliance NLD - Ambala				
Reliance - Ambala				



<b>Himachal Pradesh</b>				
Cellone Shimla	0.80%	0.00%	0.00%	
<b>POI with Private Operators</b>				
Reliance CDMA Shimla				
Aircel Shimla, MSC1				
Idea Cellular		1.00%	0.60%	No Augmentation required. Congestion is for one day on 20.9.08 as massive landslides in Shimla town and POI media got affected
<b>J &amp; K</b>				
Cellone, Jammu	20.80%	0.00%	0.00%	
Cellone, Srinagar	23.00%	0.00%	0.00%	
<b>POI with BSNL Level 1 Tax</b>				
Jammu				
<b>POI with BSNL Level 2Tax</b>				
Srinagar	21.40%	15.70%	0.00%	
<b>POI with Private Operators</b>				
BTSOL JAL NLD-SRINAGAR MSC1				
<b>Kolkata</b>				
<b>POI with BSNL Level 1 Tax</b>				
Salkia ILDO				
Salkia NLD				
BSNL Telephone Bhawan ILDO	0.90%	0.00%	0.00%	
<b>POI with Private Operators</b>				
BTSOL ILDO				
BTSOL NLDO				
Vodafone GMSC				
Vodafone Kolkata OG	3.50%	0.00%	0.00%	
Vodafone WB OG	7.40%	0.00%	0.00%	
Reliance WB GMSC				
RIM Kolkata	2.70%	0.90%	0.00%	
Tata Mobile Kolkata				
<b>Madhya Pradesh</b>				
Cellone	6.94%	11.58%	0.00%	
<b>POI with BSNL Level 1 Tax</b>				
Bhopal	26.48%			
Bhopal Arera OG	31.03%	43.80%	0.00%	
<b>POI with BSNL Level 2 TAX</b>				
Raipur	0.80%	0.00%	0.00%	
<b>POI with Private Operators</b>				
Reliance GSM	0.94%	0.00%	0.00%	
Reliance Fix Indore	1.93%	0.00%	0.00%	
Reliance CDMA Indore	0.82%	0.00%	0.00%	
Reliance CDMA Bhopal		0.00%	0.00%	
Idea	4.00%	0.00%	0.00%	
Idea Bhopal				
<b>Maharashtra &amp; Goa</b>				
Cellone		4.21%	6.21%	27 E1s augmentation is in process
<b>POI with BSNL Level 1TAX</b>				
Pune				
Nagpur,OCB				
<b>POI with BSNL Level 2TAX</b>				
Sangli				
Beed	1.87%	0.00%	0.00%	
<b>POI with Private Operators</b>				
Bharti_Idea				
Bharti_Orange Mumbai		1.21%	1.21%	Orange is providing 3 E1s with new GMSC
Bharti-Reliance Mumbai IC				
Tata Fix OG Mumbai				
Tata Fix Kolhapur				
Reliance WLL Outgoing	10.32%	0.00%	0.00%	
Reliance Fixed line				
Reliance Pune	5.47%	2.39%	7.93%	Reliance addition is pending since Dec 07. Reliance is not providing 45 E1s from GMSC location of Airtel OG
Rel 620 (MGW)				
Idea Outgoing, Pune	4.32%	3.41%	4.97%	Idea has agreed to provide 25E1s from new MSS-9 in addition to this augmentation of 30E1s WIP. 15 E1 addition AT done for MSS-9
BPL	11.30%	6.29%	9.84%	Vodafone need to provide 32 E1s. 6E1s augmentation done and additional E1s is in progress

<b>North East</b>				
Cellone-Shillong	7.00%	1.00%	0.00%	
<b>POI with BSNL Level 1 Tax</b>				
Shillong	36.00%	0.00%	0.00%	
<b>POI with BSNL Level 2 TAX</b>				
Aizwal		9.00%	0.00%	
Agartala	17.00%	0.00%	22.00%	7E1 applied and AT pending
<b>POI with Private Operators</b>				
SHILLONG BTSOL Kolkata				
Aircel-Shillong				
BTSOL Kolkata				
<b>Rajasthan</b>				
Cellone	11.30%	0.00%	0.00%	
Cellone	1.00%	0.00%	0.00%	
<b>POI with BSNL Level 1 TAX</b>				
CELL10	10.60%	37.52%	0.00%	
RJGMSC1 CELL1		14.52%	0.00%	
RJGMSC1 CELL2		1.66%	0.00%	
JPBAJ1		0.91%	0.00%	
<b>POI with BSNL Level 2 TAX</b>				
Baswara				
<b>POI with Private Operators</b>				
Reliance Basic	66.70%	71.72%	77.88%	Delay is augmentation from RIL. RIL is not allowing for POI augmentation. Matter already escalated to all concerned. Recently RIL had agreed for POI augmentation Expected Augmentation by 10.10.08
RIL	13.60%	24.37%	23.58%	Delay is augmentation from RIL. RIL is not allowing for POI augmentation. Matter already escalated to all concerned. Recently RIL had agreed for POI augmentation Expected Augmentation by 10.10.08
RIL		6.42%	0.00%	
<b>Tamil Nadu</b>				
<b>POI with Private Operators</b>				
Reliance Mobile Chennai Airtel OG	25.70%	19.14m%	5.15%	Approval for augmentation pending with Reliance
Reliance Mobile-Coimbatore				
Reliance fixed-Coimbatore				
Vodafone-Madurai			6.01%	The POI to be established with Airtel Trichy to offload the utilisation is in progress
<b>UP - East</b>				
Cellone	13.61%	0.90%	11.00%	517 E1s feasibility is awaited from BSNL
<b>POI with BSNL Level 1 TAX</b>				
BSNL Tax Level 1	1.97%	0.86%	0.00%	
Indranagar Axe Exch. MSC-1		0.00%	58.00%	40 E1s applied and feasibility is awaited
Indranagar Axe. Exch.		0.00%	25.00%	
<b>POI with Private Operators</b>				
Reliance Mobile		0.00%	8.57%	1-STM-1 to be augmented by 15.10.08
Idea Cellular		0.84%	2.00%	63 E1s augmentation is planned by 10.10.08
Vodafone		0.85%	0.00%	
<b>West Bengal</b>				
Cellone				
<b>POI BSNL Level 2 TAX</b>				
Asansol STD				
<b>POI with Private Operators</b>				
Vodafone Kolkata OG	2.30%	0.00%	0.00%	
Vodafone WB	1.50%	0.80%	1.23%	Augmentation pending for the last 3 months from Voda end
RELGMKG6				
MSS BEH to Voda ASN	5.40%	0.00%	0.00%	
Tata Wireless Asansol	0.50%	0.00%	0.00%	
<b>Mumbai</b>				
<b>POI MTNL</b>				
Dolphin Total	0.00%	0.00%	2.55%	18E1s augmented in Sept08.28E1s will be augmented by 10.10.08

<b>POI with Private Operators</b>	0.00%			
Tata Fixed Line	0.00%	1.75%	1.20%	4E1s augmented will be augmented by 10.10.08
Tata CDMA Total	0.00%	1.35%	1.35%	19E1s augmented will be augmented by 11.10.08
Tata CDMA Total	0.00%	2.39%	2.15%	6E1s augmented will be augmented by 10.10.08
Reliance WLL	0.00%	2.25%	0.00%	
Reliance Fixed	0.00%	1.15%	1.15%	4E1s augmented will be augmented by 10.10.08
BPL	0.53%	1.44%	1.35%	15E1s augmented in Sept08.10E1s will be augmented by 12.10.08
BPL MAH Total	0.00%	1.55%	1.50%	4E1s augmented will be augmented by 10.10.08
Bharti NLDO Total	0.75%	1.20%	0.00%	
Bharti-Vodafone Total	0.65%	3.00%	2.25%	4E1s augmented in Sept08.20E1s will be augmented by 11.10.08
Bharti-MAH Total	0.55%	0.00%	0.00%	
BTSOL Fixed	0.00%	1.46%	1.18%	5E1s augmented will be augmented by 11.10.08
Idea MAH Total	0.65%			
Vodafone				
Tata Fixed line Total	0.83%	0.00%	0.00%	
<b>Chennai</b>				
Cellone Chennai				
<b>POI with Private Operators</b>				
Tata Fixed Line				
Reliance	0.00%	0.00%	7.80%	The port allotment for the augmentation is pending with Reliance
<b>Assam</b>				
Cellone	34.00%	29.00%	35.00%	Additional 30 E1s in pipelines
<b>POI with BSNL Level 2 TAX</b>				
Silchar	29.00%	24.00%	0.00%	
<b>POI with Private Operators</b>				
Reliance				
BTSOL Kolkata				
<b>Karnataka</b>				
<b>POI with BSNL Level 2 TAX</b>				
Belgaum				
<b>UP -WEST</b>				
Cellone	4.81%	5.57%	7.75%	Two STM-1 augmentation feasibility is pending at BSNL end
<b>POI with BSNL Level 2 TAX</b>				
Almorah	0.00%	0.76%	0.90%	2 E1s applied feasibility awaited from BSNL
<b>POI with Private Operators</b>				
Idea Cellular	0.00%	0.80%	1.09%	One STM-1 augmentation is planned by 15.10.08
Vodafone				
Reliance Fixed	0.00%		4.45%	22 E1s augmentation is planned by 20.10.08
Reliance		1.19%	0.00%	

**POIs Congestion Report of M/s Tata Teleservices for the months of July, August & September 2008**

Name of Circle and POIs	Benchmark <0.5%			Action taken by M/s Tata Teleservices Ltd
	July ,2008	August,2008	September,2008	
<b>Haryana</b>				
Cellone, Ambala	2.88%		0.00%	
Cellone, Panipat	10.08%		0.00%	
<b>Himachal Pradesh</b>				
<b>POI with Private Operators</b>				
TTSL NLD FWP/Cmo-Jalandhar				
<b>Bihar</b>				
Cellone Patna	67.00%		0.00%	
Cellone Patna GMSC	81.00%		0.00%	
<b>POI with BSNL Level 2 TAX</b>				
Patna				
Munger				
<b>POI with Private Operators</b>				
RTL-LOCAL				
AIRTEL, Ranchi				
Aircel				
<b>Andhra Pradesh</b>				
Cellone		0.00%	12.30%	augmentation pending once completed the formalities will be doing the same
<b>POI with Private Operators</b>				
Vodafone 2				
Idea-2 Fixed from Tandem		0.80%	0.00%	
Idea from GMSC				
VSNL ILD from Tandem				
Airtel-2 mobile from GSMC		9.70%	0.00%	
<b>Karnataka</b>				
<b>POI with BSNL Level 1 TAX</b>				
Belgaum				
Mangalore				
Karwar				
<b>POI with Private Operators</b>				
Reliance Mangalore	2.95%	0.00%	0.00%	

**POIs congestion Report of M/s Reliance Communications Ltd. for the month of July, August & September,2008**

Name of Circle and POIs	Benchmark <0.5%			Action taken by M/s Reliance Communications Ltd
	July,2008	August,2008	September,2008	
<b>Madhya Pradesh</b>				
<b>POI with Private Operators</b>				
Bharti				
<b>Andhra Pradesh</b>				
Cellone	21.40%	30.30%	26.00%	No comments
<b>POI with BSNL Level 2 TAX - Basic POIs</b>				
Thiruvuru				
<b>POI with Private Operators</b>				
Bharti	4.70%	0.00%	0.00%	
Vodafone				
Idea				
<b>Bihar</b>				
Cellone, Bihar	14.30%	22.60%	14.50%	No comments
Cellone, Patna				
<b>POI with BSNL Level 1 TAX</b>				
Rajender Nagar	0.60%	3.40%	2.50%	No comments
<b>POI with BSNL Level 2 TAX</b>				
Dultonganj				
Saharsa	11.10%	0.00%	5.50%	No comments
<b>POI with Private Operators</b>				
Bharti		6.30%	9.80%	No comments
Aircel				
<b>Karnataka</b>				
<b>POI with BSNL Level 2 TAX - Basic POIs</b>				
BSNL Tax				
Hasan TAX		0.00%	8.80%	No comments
Virajpet LEX				
Somwarpet		0.00%	16.30%	No comments
<b>Maharashtra</b>				
Cellone, Nagpur				
<b>POI with BSNL Level 2 TAX - Basic POIs</b>				
Nanded				
<b>POI with Private Operators</b>				
BPL				
<b>Orissa</b>				
<b>POI with Private Operators</b>				
RTL				
<b>Rajasthan</b>				
<b>POI with BSNL Level 1 TAX</b>				
Sawai Madhopur				
<b>POI with Private Operators</b>				
Bharti	6.50%	7.20%	12.00%	No comments
<b>Tamilnadu</b>				
<b>POI with Private Operators</b>				
BPL				
<b>UP - East</b>				
Cellone, Lucknow (Nokia)				
Cellone				
<b>POI with BSNL Level 2 TAX - Basic POIs</b>				
Farukhabad TE				
Orai BSNL				
<b>POI with Private Operators</b>				
Airtel,Lucknow		0.00%	15.40%	No comments
Tata				
<b>UP - W</b>				
Cellone				
Cellone, Meerut				
<b>POI with Private Operators</b>				
Bharti		1.00%	1.50%	No comments
Vodafone	0.80%	0.50%	0.70%	No comments
<b>Kolkata</b>				
<b>POI with Private Operators</b>				
Bharti		2.50%	2.70%	No comments

<b>West Bengal</b>				
<b>POI with Private Operators</b>				
Bharti				
Vodafone	0.80%	0.70%	0.70%	No comments
Aircel				
<b>Gujarat</b>				
<b>POI with BSNL Level 2 TAX - Basic POIs</b>				
Ahmedabad				
<b>POI With Private Operators</b>				
Idea				
<b>Chennai</b>				
<b>POI With Private Operators</b>				
Vodafone				
<b>Haryana</b>				
Cellone, Haryana	4.30%	4.30%	6.40%	No comments
<b>POI with BSNL Level 2 TAX - Basic POIs</b>				
Ambala				
<b>POI with Private Operators</b>				
Vodafone				
Bharti				
<b>Himachal Pradesh</b>				
Cellone, Himachal Pradesh	4.10%	2.50%	3.40%	No comments
<b>POI with BSNL Level 2 TAX - Basic POIs</b>				
Bilaspur		0.00%	2.10%	No comments
Hamirpur				
<b>POI with Private Operators</b>				
Aircel	3.40%	3.00%	2.80%	No comments
<b>Kerala</b>				
<b>POI with Private Operators</b>				
Idea		0.00%	0.60%	No comments
<b>Mumbai</b>				
<b>POI with Private Operators</b>				
Vodafone		0.00%	1.30%	No comments
BPL		3.60%	0.00%	

**POIs Congestion Report of M/s Reliance Telecom Ltd. for the months of July, August & September,2008**

Name of Circle and POIs	Benchmark <0.5%			Action taken by M/s Reliance Telecom Ltd
	July,2008	August,2008	September,2008	
<b>Bihar</b>				
<b>POI with BSNL Level 1 TAX</b>				
Patna	3.89%	3.17%	1.43%	A/T for Cellon POI has been completed new POI is expected to be commissioned in 1st week of Oct. New POI will decongest this POI because Cellone calls are being route through this POI
<b>POI with BSNL Level 2 TAX</b>				
Saharsa	44.54%	36.54%	17.50%	Augments ofg POI is approved But as per the instructions of SSA,POI builtup has to be shifted from Microwave building to Tax building BSNL order for the same is awaited
Katihar				
<b>POI with Private Operators</b>				
Aircel Bihar				
Airtel, Ranchi MSC2				
Airtel Local Bihar	20.32%	17.32%	58.50%	Routing changes made. This POI is carrying overflow all th POIs .Further augmentation of Airtel POI has been initiated with 63E1s
Airtel Local with Ranchi MSC				
Airtel Local with Patna		18.34%	0.00%	
Airtel Local with Muzaffarpur MSC	24.56%	27.56%	0.00%	
Airtel Local with Bhagalpur MSC	8.92%	8.92%	0.00%	
<b>Himachal Pradesh</b>				
<b>POI with BSNL Level 1 TAX</b>				
Shimla	5.35%	17.65%	23.95%	12 E1s applied with level 1 and 16 E1s applied with cellone
<b>POI with Private Operators</b>				
Aircel Shimla				
<b>Assam</b>				
Cellone	4.00%	4.00%	1.40%	43 E1s applied
<b>POI with BSNL Level 2 TAX</b>				
Silchar				
<b>Kolkata</b>				
<b>POI with Private Operators</b>				
Aircel Kolkata				
<b>North East</b>				
Cellone Shilong	78.04%	78.38%	69.18%	10 E1s has been augmented ready to open
<b>POI with BSNL Level 2 TAX</b>				
Agartala	2.39%	0.00%	0.00%	
Shilong	0.00%	0.00%	23.39%	8 E1s with L1 Tax applied for on 22.8.08.
<b>POI with Private Operators</b>				
Aircel Shillong				
<b>WEST BENGAL</b>				
<b>POI with Private Operators</b>				
RCOM GMSC KGP				

**POI Congestion Report of M/s Idea Cellular Ltd. for the month of July, August & September, 2008**

Name of Circle and POIs	Benchmark <0.5%			Action taken by M/s Idea Cellular Ltd
	July,2008	August,2008	September,2008	
<b>Madhya Pradesh</b>				
Cellone Bhopal				
<b>POI with BSNL Level 2 TAX</b>				
Bhopal				
Raipur				
<b>POI with Private Operators</b>				
VSNL Gwalior,NLD				
Reliance WLL-M Raipur				
Airtel, Raipur				
Airtel Indore				
<b>Delhi</b>				
<b>POI with MTNL</b>				
Dolphin - Karolbagh	5.31%	5.12%	4.72%	30 E1s applied on 28.2.08 under process
Dolphin	1.54%	2.45%	1.31%	31 E1s applied on 28.2.08 under process
<b>Rajasthan</b>				
<b>POI with Private Operators</b>				
Airtel		0.00%	5.20%	
VSNL Jaipur	2.03%	0.00%	0.00%	
RCL Jaipur		1.17%	0.00%	
<b>UP - West</b>				
<b>POI with BSNL Level 1 TAX</b>				
AXE 10 Indranagar,Cellone,Lucknow				
<b>POI with BSNL Level 2 TAX</b>				
Kotdwar	48.66%	33.97%	49.63%	2 Ports applied. Currently port is not feasible at Kotdwar Exchange and will be available after upgradation of TAX. Proposal for shifting the POI to Srinagar Exchange
Almora		0.00%	48.26%	5 ports applied for augmentation
<b>POI with Private Operators</b>				
RIL-UPW		26.58%	63.42%	Ports augmentation is pending from RIL end
RIL-UPW		11.20%	22.79%	Ports augmentation is pending from RIL end
RIL-UPW2				
<b>Andhra Pradesh</b>				
<b>POI with BSNL Level 2 TAX</b>				
Adilabad				
Sangareddy		0.70%	0.00%	
Secundrabad OCB	1.28%	0.00%	0.00%	
Srikakulam	0.90%	0.00%	0.00%	
Tirupathi	0.71%	0.00%	0.00%	
Vizianagaram	2.57%	0.00%	0.00%	
<b>Maharashtra</b>				
<b>POI with BSNL Level 2 TAX</b>				
Ahmednagar				
Beed		0.67%	2.05%	Accidental congestion due to blocking of partial devices
Bhandara				
Bhiwandi		2.56%	8.28%	Accidental congestion due to blocking of partial devices
Jalna		2.04%	0.00%	
Latur		0.00%	0.52%	Accidental congestion due to blocking of partial devices
Nagpur				
Osmanabad		0.97%	0.00%	
Yavatmal				
<b>POI with Private Operators</b>				
Vodafone Mumbai				
Reliance F Mumbai		0.00%	6.59%	Accidental congestion
Reliance M Mumbai		0.00%	4.99%	Incidental congestion on 16.9.08
Reliance NLD		0.00%	6.62%	Augmentation done at this POI. Over flow given on PUG MSS1 VSNL NLD route
BPL Mumbai				
<b>Kerala</b>				
Cellone MSC1	2.70%	3.41%	0.00%	
Cellone MSC2				
Cellone MSC5	7.21%	0.00%	0.00%	



<b>POI with BSNL Level 2 TAX</b>				
Ernakulam				
Ernakulam NLD				
<b>POI with Private Operators</b>				
Vodafone CMSP MSC1				
Vodafone CMSP MSC2				
Vodafone CMSP MSC3				
Vodafone CMSP MSC5				
Vodafone NLD MSC3	5.52%	0.00%	0.00%	
Airtel MSC3	5.54%	0.00%	0.00%	
Reliance ILD MSC1	0.69%	4.57%	5.58%	POI augmentation pending with R-Com
Reliance ILD MSC1				
Reliance ILD MSC3		0.68%	1.06%	POI augmentation pending with R-Com
Reliance NLD MSC1	0.60%	0.00%	0.00%	
Reliance NLD MSC2	6.31%	0.00%	0.00%	
Reliance NLD MSC3				
Reliance Soft NLD MSC1				
Reliance Mobile MSC1	12.01%	7.56%	8.00%	POI augmentation pending with R-
Reliance Mobile MSC1	0.82%	0.00%	0.00%	
Reliance Mobile MSC2				
Reliance Mobile MSC3	1.53%	2.78%	0.00%	
Reliance Mobile MSC3				
Reliance Mobile MSC6				
VSNL ILD MSC1	1.50%	0.00%	0.00%	
VSNL ILD MSC3				
VSNL NLD MSC1				
Tata Mobile MSC3				
<b>UP- East</b>				
Cellone Lucknow OG				
Cellone OG				
Cellone RTTC	14.66%	0.00%	0.00%	
<b>POI with BSNL Level 2 TAX</b>				
Azamgarh				
<b>Haryana</b>				
Cellone Panipat	29.14%	24.60%	31.35%	Augmentation of 40 E1 are planned which will remove congestion with cellone POI
<b>POI with BSNL Level 1 TAX</b>				
Ambala				
<b>POI with BSNL Level 2 TAX</b>				
Sonepat	3.51%	3.67%	0.00%	
<b>Himachal Pradesh</b>				
Cellone	67.58%	68.39%	67.85%	2 E1s feasibility received, waiting for demand note
<b>POI with BSNL Level 1 TAX</b>				
Shimla	11.57%	37.70%	42.18%	BSNL A/T completed for 4 E1s , waiting for commissioning
<b>POI with Private Operators</b>				
VSNL NLD (Jalandhar)				
VSNL NLD (Ambala)				
VSNL NGN-Jalandhar				

**POI Congestion Report of M/s Vodafone Essar Mobile Services Ltd. for the month of July, August & September 2008**

Name of Circle and POIs	Benchmark <0.5%			Action taken by M/s Vodafone Essar Mobile Ltd
	July,2008	August,2008	September,2008	
<b>Delhi</b>				
<b>POI With MTNL</b>				
Dolphin				
<b>POI with Private Operators</b>				
Reliance NLD	2.97%	2.97%	2.97%	Capacity is being augmented to remove congestion
<b>Punjab</b>				
Cellone Jalandhar				
<b>POI with Private Operators</b>				
Reliance NLD	9.96%	6.74%	10.08%	POI expansion in process
<b>Andhra Pradesh</b>				
Cellone	14.00%	14.50%	0.00%	
<b>Gujarat</b>				
Cellone1	0.00%	0.00%	23.55%	26PCM switch AT done on 3.10.08
Cellone2	0.00%	0.00%	20.90%	26PCM switch AT done on 3.10.09
<b>POI with BSNL Level 2 TAX</b>				
Ahmedabad2 MSCA2				
Ahmedabad3 MSCA0				
Ahmedabad1 TMSCA0				
Ahmedabad2 TMSCA0				
Ahmedabad3 TMSCA0				
Ahmedabad4 TMSCA0				
Ahmedabad1 GMSC9		0.00%	4.45%	126 pcm demanded from cellone BSNL
Ahmedabad2 GMSC9		3.27%	9.29%	126 pcm demanded from cellone BSNL
Ahmedabad3 GMSC9				
Ahmedabad4 GMSC9	15.22%	4.07%	0.00%	
Ahmedabad3 MSC1				
Ahmedabad2 MSC3		3.93%	0.00%	
Rajkot TMSCR0				
Rajkot2 TMSCR0				
<b>POI with Private Operators</b>				
CMPS Airtel MSC1				
CMPS Airtel2 MSC1		9.32%	0.00%	
CMPS Airtel MSCA0				
CMPS Airtel MSCA2				
CMPS Airtel MSCS2				
CMPS Airtel MSC3	11.54%	6.97%	2.49%	10 pcm demanded and pending from AIRTEL
CMPS Airtel MSC4				
CMPS Airtel MSC5				
CMPS Airtel MSC6				
CMPS Airtel MSC7				
CMPS Airtel MSC8		0.00%	0.86%	3 PCM added with GCs01 & re-engineering traffic plan
Airtel2 GMSC10				
Airtel2 GMSC9				
CMPS Airtel TMSCR0				
Airtel1 MSS01				
TMSCRO Airtel 2				
TMSCRO Airtel				
MSS01 Airtel 3				
BSO RIM WS OG MSCA2				
BSO RIM WS O/G MSC3				
BSO RIM WS 93 MSC3				
BSO RIM 93 MSC7				
RIM MSCS1				

RIM MSC1 BSO 93 O/G		0.00%	0.86%	18 pcm demanded from MSSo4 & re-engineering traffic
RIM MSC2 BSO 93 O/G		0.00%	3.08%	3 pcm demanded from RIL
RIM MSC3 BSO 93 O/G		0.00%	9.19%	4 pcm demanded from RIL
RIM MSCA2 BSO 93 O/G				
RIM MSC4				
RIM MSC6				
RIM MSC8		0.00%	0.79%	20 PCM demanded from mss-3 & re-engineering traffic plan
RILWS MSCAO				
RIL WS MSC1				
<b>Rajasthan</b>				
<b>POI with BSNL Level 2 TAX</b>				
Jaipur GSM2	5.70%	5.48%	0.00%	
<b>POI with Private Operators</b>				
Reliance WLL		0.00%	0.81%	
Reliance NLD	1.59%	5.93%	0.00%	
Reliance ILD	3.84%	0.00%	0.00%	
VSNL AMD		1.01%	0.00%	
Airtel, Jodhpur				
BTSOL NLD GMSC1				
<b>Haryana</b>				
Cellone	86.94%	87.30%	52.96%	of 169 E1s pending with BSNL
<b>POI with BSNL Level 1 TAX</b>				
Ambala OCB	0.00%	0.00%	23.22%	Haryana over flow traffic through this POI. 25 E1s augmentation is in process
Ambala EWSD	0.00%	0.00%	2.95%	Congestion due to Cellone Haryana over flow traffic through this POI. 31 E1s augmentation is in process
<b>POI with Private Operators</b>				
Reliance	4.69%	5.25%	5.49%	32 E1s augmentation is in process
REL NLD	79.69%	56.57%	41.71%	15 E1s augmentation is in process
<b>Maharashtra</b>				
Cellone	0.00%	5.40%	19.89%	Augmentation of E1s under progress for 20 E1s in Pune: Augmentation of E1s under progress for 15E1s in Nagpur
<b>POI with Private Operators</b>				
RIL WLL				
RIL NLD				
RIL Local FWT				
Reliance Mum	0.00%	1.20%	2.28%	Reliance is facilitating to extend transmission medial till their premises
Reliance MH				
<b>Tamilnadu</b>				
<b>POI with BSNL Level 1 TAX</b>				
Kanchpr	0.00%	0.00%	1.40%	STM-4 Mux installation Completed. AT is in progress and it will be augmented by III week of May'08
OCBTXOUT	0.00%	0.00%	3.50%	STM-1 Mux installation Completed. AT is in progress and it will be augmented by III week of May'09
<b>Kolkata</b>				
<b>POI with Private Operators</b>				
NLD Reliance Mobile MSC1				
NLD Reliance Mobile	10.00%	0.00%	0.00%	
NLD Reliance Mobile MSC2				
NLD Reliance MSC3				
Local-RTL				
<b>Mumbai</b>				
<b>POI with Private Operators</b>				
RIL NLD	18.54%	27.93%	0.00%	
RIL WLL	11.19%	14.84%	0.00%	
Reliance WLL				
RIL CDMA Mah	0.00%	0.67%	0.00%	
Tata Fixed Line				
Tata Fixed line Total				
Reliance WLL				
BPL				
Dolphin Total				
Bharti	35.30%	0.00%	0.00%	
Bharti NLDO Total				
Bharti-Vodafone Total				
Bharti-MAH Total				
Idea MAH Total				
Vodafone				

**POI Congestion Report of M/s Dishnet Wireless Ltd. for the month of July, August & September 2008**

Name of Circle and POIs	Benchmark <0.5%			Action taken by M/s Dishnet Wireless Ltd
	July,2008	August,2008	September,2008	
<b>Assam</b>				
<b>POI with BSNL Level 1 TAX</b>				
Guwahati MSC1 NLD	11.57%	2.78%	3.52%	No comments
Guwahati MSC2 NLD	4.86%	7.09%	3.62%	No comments
Jorhat MSC1	0.00%	1.98%	1.27%	No comments
<b>POI with BSNL Level 2 TAX</b>				
Silchar				
<b>POI with Private Operators</b>				
Airtel Local ,Jorhat				
Reliance Infocom NLD				
BTSOL NLD MSC1, Guwahati				
BTSOL NLD MSC2, Guwahati				
VSNL NLD, Guwahati				
VSNL NLD, Jorhat				
<b>North East</b>				
<b>Cellone Shillong</b>				
<b>POI with BSNL Level 1 TAX</b>				
Shillong MSC1 Local	13.60%	7.84%	6.38%	No comments
Shillong NLD	17.39%	2.35%	18.59%	No comments
Shillong ILD	1.99%	1.81%	0.00%	No comments
Dimapur MSC-1 Local	0.00%	0.00%	8.03%	No comments
<b>POI with BSNL Level 2 TAX</b>				
Kohima				
<b>POI with Private Operators</b>				
Airtel Local				
Reliance Infocom Local				
BTSOL NLD				
VSNL ILD				
<b>West Bengal</b>				
<b>POI with BSNL Level 1 TAX</b>				
Durgapur MSC1 ILD				
Durgapur MSC1 Local	2.66%	0.75%	3.57%	No comments
Durgapur MSC1 NLD	3.58%	0.00%	1.67%	No comments
Siliguri MSC1 Local				
<b>POI with BSNL Level 2 TAX</b>				
Berahmpur				
<b>POI with Private Operators</b>				
RIM Kharagpur MSC-1 Local				
RIM Kharagppur MSC-2 Local				
RTL MSC-3 Local				
VSNL NLD				
<b>Orissa</b>				
<b>POI with BSNL Level 1 TAX</b>				
Bhubaneshwar MSC1 Local				
Bhubaneshwar MSC1 NLD				
Bhubaneshwar MSC2 NLD	0.00%	22.22%	0.00%	
Sambalpur MSC1 NLD	0.00%	2.00%	0.00%	
<b>POI with Private Operators</b>				
Airtel Local				
<b>J &amp; K</b>				
<b>Cellone Jammu</b>				
<b>Cellone Srinagar</b>				
<b>POI with BSNL Level 1 TAX</b>				
Jammu Local		0.83%	0.86%	No comments
Jammu ILD		0.00%	1.00%	No comments
Jammu NLD	1.43%	0.00%	0.00%	
Srinagar MSC1 Local	12.96%	22.75%	20.69%	No comments
<b>POI with Private Operators</b>				
VSNL NLD				
BTSOL NLD				
<b>Bihar</b>				
<b>Cellone Ranchi</b>				
<b>Cellone Patna</b>				
<b>POI with BSNL Level 1 TAX</b>				
Patna				
Patna MSC1 ILD	0.78%	0.00%	0.00%	
Patna Local	46.53%	11.04%	13.49%	No comments
Patna NLD	0.88%	5.13%	2.83%	No comments
Patna MSC2 Local	67.73%	21.65%	20.44%	No comments
Ranchi MSC1				
Ranchi MSC1 Local	56.66%	14.24%	13.57%	No comments
Patna BSNL Rajendra Nagar				
Patna BSNL Buddhamarg				

<b>POI with BSNL Level 2 TAX</b>				
Darbhanga				
Chapra				
Gaya				
Gaya				
Bhagalpur				
<b>POI with Private Operators</b>				
Airtel MSC-2-Local				
Airtel Patna MSC-1 Local				
Airtel Patna MSC2 Local				
Airtel Muzaffarpur MSC-1				
Airtel Ranchi MSC1-Local				
BTSOL NLD				
Reliance Infocom Local				
RTL Local				
VSNL Kolkata NLD				
<b>Himachal Pradesh</b>				
<b>POI with BSNL Level 2 TAX</b>				
Shimla MSC1 Local	1.38%	1.14%	2.77%	No comments
Shimla MSC1 NLD	0.00%	0.00%	9.63%	No comments
Kulu				
<b>Kolkata</b>				
<b>POI with BSNL Level 1 TAX</b>				
Kolkata MSC-1 Local	3.64%	41.98%	13.57%	No comments
Kolkata NLD	12.01%	25.07%	0.00%	

**POI Congestion Report of M/s Spice for the month of July, August & September,2008**

Name of Circle and POIs	Benchmark <0.5%			Action taken by M/s Spice Ltd
	July,2008	August,2008	September,2008	
<b>Karnataka</b>				
<b>POI with BSNL Level 1 TAX</b>				
Belgaum				
Mangalore				
Karwar	0.00%	0.00%	1.25%	No comments
<b>Punjab</b>				
Cellone	0.59%	0.00%	0.00%	
<b>POI with Private Operators</b>				
Reliance NLD				

**POI Congestion Report of M/s Aircel Ltd. for the month of July, August & September, 2008**

Name of Circle and POIs	Benchmark <0.5%			Action taken by M/s Aircel Ltd
	July,2008	August,2008	September,2008	
<b>Chennai</b>				
<i>POI with Pri vate Operators</i>				
Vodafone	2.00%	1.80%	1.20%	No Comments